

IDH2 Rabbit mAb

Catalog No: #52355



Package Size: #52355-1 50ul #52355-2 100ul

Orders: order@signalwayantibody.com
Support: tech@signalwayantibody.com

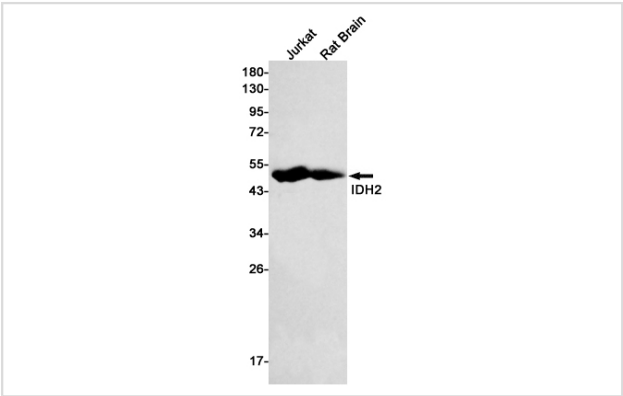
Description

Product Name	IDH2 Rabbit mAb
Host Species	Recombinant Rabbit
Clonality	Monoclonal antibody
Clone No.	S04-1B0
Isotype	Rabbit IgG
Purification	Affinity Purified
Applications	WB
Species Reactivity	Human,Mouse,Rat
Immunogen Description	A synthetic peptide of human IDH2
Conjugates	Unconjugated
Modification	Unmodification
Other Names	IDH; IDP; IDHM; IDPM; ICD-M; D2HGA2; mNADP-IDH
Accession No.	Swiss-Prot:P48735GeneID:3418
Uniprot	P48735
GeneID	3418
Calculated MW	Calculated MW: 51 kDa; Observed MW: 51 kDa
Concentration	0.3 mg/ml
Formulation	50mM Tris-Glycine(pH 7.4), 0.15M NaCl, 40% Glycerol, 0.01% Sodium azide and 0.05% BSA
Storage	Store at 4°C short term. Aliquot and store at -20°C long term. Avoid freeze/thaw cycles.

Application Details

WB: 1/1000-1/5000;

Images



Western blot detection of IDH2 in Jurkat,Rat Brain lysates using IDH2 Rabbit mAb(1:500 diluted).Predicted band size:51kDa.Observed band size:43kDa.

Background

Swiss-Prot Acc.P48735.Plays a role in intermediary metabolism and energy production. It may tightly associate or interact with the pyruvate dehydrogenase complex.

Note: This product is for in vitro research use only