

Lamin A/C Rabbit mAb

Catalog No: #52391



Package Size: #52391-1 50ul #52391-2 100ul

Orders: [order@signalwayantibody.com](mailto:order@signalwayantibody.com)  
Support: [tech@signalwayantibody.com](mailto:tech@signalwayantibody.com)

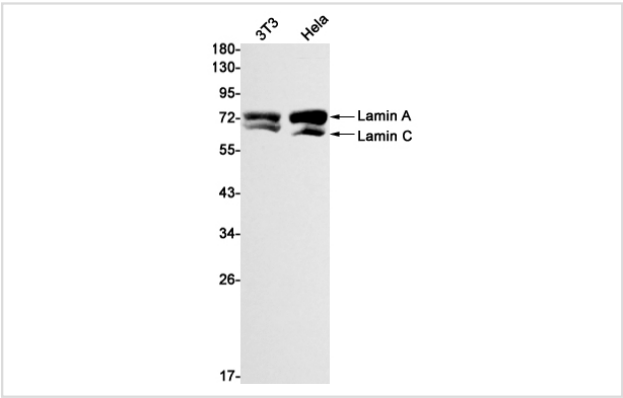
Description

Product Name	Lamin A/C Rabbit mAb
Host Species	Recombinant Rabbit
Clonality	Monoclonal antibody
Clone No.	S06-7H5
Isotype	Rabbit IgG
Purification	Affinity Purified
Applications	WB IHC IF
Species Reactivity	Human,Mouse,Rat
Immunogen Description	A synthetic peptide of human Lamin A/C
Conjugates	Unconjugated
Modification	Unmodification
Other Names	FPL; IDC; LFP; CDDC; EMD2; FPLD; HGPS; LDP1; LMN1; LMNC; MADA; PRO1; CDCD1; CMD1A; FPLD2; LMNL1; CMT2B1; LGMD1B
Accession No.	Swiss-Prot:P02545GeneID:4000
Uniprot	P02545
GeneID	4000
Calculated MW	Calculated MW: 74 kDa; Observed MW: 74,63 kDa
Concentration	0.3 mg/ml
Formulation	50mM Tris-Glycine(pH 7.4), 0.15M NaCl, 40% Glycerol, 0.01% Sodium azide and 0.05% BSA
Storage	Store at 4°C short term. Aliquot and store at -20°C long term. Avoid freeze/thaw cycles.

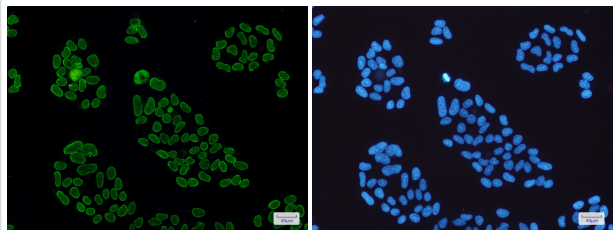
Application Details

WB: 1/1000; IHC: 1/20; ICC/IF: 1/20;

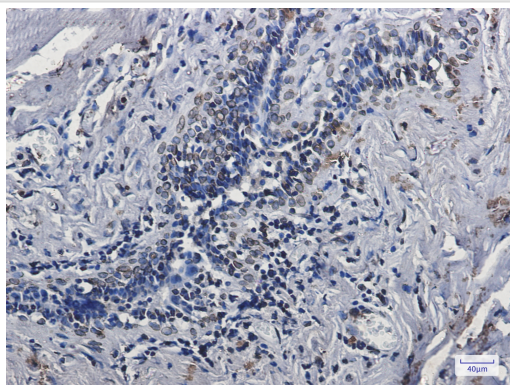
Images



Western blot detection of Lamin A/C in 3T3,HeLa cell lysates using Lamin A/C Rabbit mAb(1:1000 diluted).Predicted band size:74kDa.Observed band size: 74,63kDa.



Immunofluorescence of Lamin A/C(green) in Hela cells using Lamin A/C Rabbit mAb at dilution 1/50, and DAPI(blue)



Immunohistochemistry of Lamin A/C in paraffin-embedded Human breast cancer tissue using Lamin A/C Rabbit mAb at dilution 1/5

## Background

Swiss-Prot Acc.P02545.Lamins are components of the nuclear lamina, a fibrous layer on the nucleoplasmic side of the inner nuclear membrane, which is thought to provide a framework for the nuclear envelope and may also interact with chromatin. Lamin A and C are present in equal amounts in the lamina of mammals. Plays an important role in nuclear assembly, chromatin organization, nuclear membrane and telomere dynamics. Required for normal development of peripheral nervous system and skeletal muscle and for muscle satellite cell proliferation (PubMed:10080180, PubMed:22431096, PubMed:10814726, PubMed:11799477, PubMed:18551513). Required for osteoblastogenesis and bone formation (PubMed:12075506, PubMed:15317753, PubMed:18611980). Also prevents fat infiltration of muscle and bone marrow, helping to maintain the volume and strength of skeletal muscle and bone (PubMed:10587585). Required for cardiac homeostasis (PubMed:10580070, PubMed:12927431, PubMed:18611980, PubMed:23666920).

Note: This product is for in vitro research use only