

MKLP1 Rabbit mAb

Catalog No: #52421



Package Size: #52421-1 50ul #52421-2 100ul

Orders: order@signalwayantibody.com
Support: tech@signalwayantibody.com

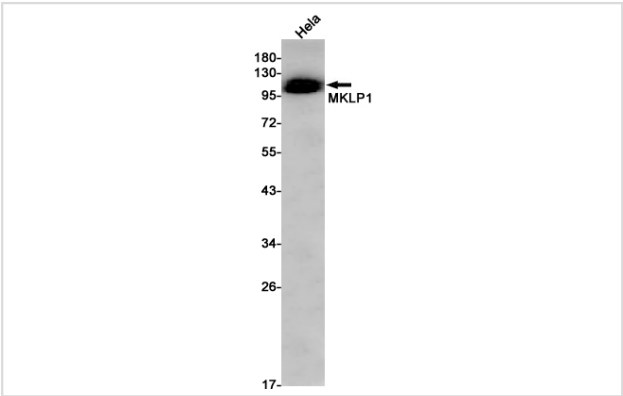
Description

Product Name	MKLP1 Rabbit mAb
Host Species	Recombinant Rabbit
Clonality	Monoclonal antibody
Clone No.	S07-2H3
Isotype	Rabbit IgG
Purification	Affinity Purified
Applications	WB
Species Reactivity	Human,Mouse,Rat
Immunogen Description	A synthetic peptide of human MKLP1
Conjugates	Unconjugated
Modification	Unmodification
Other Names	CHO1; KNSL5; MKLP1; MKLP-1
Accession No.	Swiss-Prot:Q02241GeneID:9493
Uniprot	Q02241
GeneID	9493
Calculated MW	Calculated MW: 110 kDa; Observed MW: 110 kDa
Concentration	0.3 mg/ml
Formulation	50mM Tris-Glycine(pH 7.4), 0.15M NaCl, 40% Glycerol, 0.01% Sodium azide and 0.05% BSA
Storage	Store at 4°C short term. Aliquot and store at -20°C long term. Avoid freeze/thaw cycles.

Application Details

WB: 1/1000

Images



Western blot detection of MKLP1 in HeLa cell lysates using MKLP1 Rabbit mAb(1:1000 diluted).Predicted band size:110kDa.Observed band size:110kDa.

Background

Swiss-Prot Acc.Q02241.Component of the centralspindlin complex that serves as a microtubule-dependent and Rho-mediated signaling required for the myosin contractile ring formation during the cell cycle cytokinesis. Essential for cytokinesis in Rho-mediated signaling. Required for the localization of ECT2 to the central spindle. Plus-end-directed motor enzyme that moves antiparallel microtubules in vitro.

Note: This product is for in vitro research use only