

MT ND1 Rabbit mAb

Catalog No: #52438



Package Size: #52438-1 50ul #52438-2 100ul

Orders: order@signalwayantibody.com  
Support: tech@signalwayantibody.com

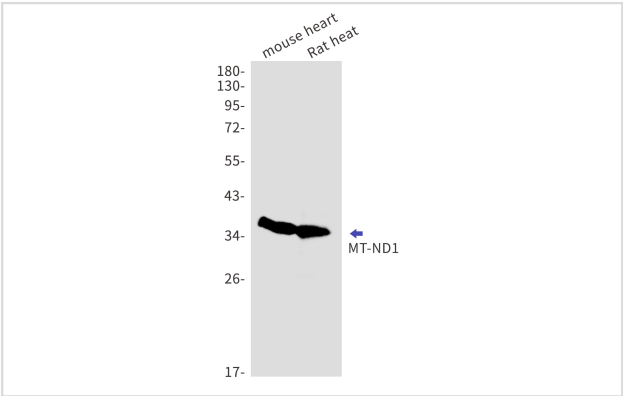
Description

Product Name	MT ND1 Rabbit mAb
Host Species	Recombinant Rabbit
Clonality	Monoclonal antibody
Clone No.	S04-9H6
Isotype	Rabbit IgG
Purification	Affinity Purified
Applications	WB
Species Reactivity	Human,Mouse,Rat
Immunogen Description	A synthetic peptide of human MT-ND1
Conjugates	Unconjugated
Modification	Unmodification
Other Names	MTND1; ND1
Accession No.	Swiss-Prot:P03886GenelD:4535
Uniprot	P03886
GenelD	4535
Calculated MW	Calculated MW: 36 kDa; Observed MW: 36 kDa
Concentration	0.3 mg/ml
Formulation	50mM Tris-Glycine(pH 7.4), 0.15M NaCl, 40% Glycerol, 0.01% Sodium azide and 0.05% BSA
Storage	Store at 4°C short term. Aliquot and store at -20°C long term. Avoid freeze/thaw cycles.

Application Details

WB: 1/1000-1/5000

Images



Western blot detection of MT-ND1 in mouse heart,Rat heart cell lysates using MT-ND1 Rabbit mAb(1:1000 diluted).Predicted band size:36kDa.Observed band size:36kDa.

## Background

---

Swiss-Prot Acc.P03886.Core subunit of the mitochondrial membrane respiratory chain NADH dehydrogenase (Complex I) that is believed to belong to the minimal assembly required for catalysis. Complex I functions in the transfer of electrons from NADH to the respiratory chain. The immediate electron acceptor for the enzyme is believed to be ubiquinone .

---

Note: This product is for in vitro research use only