

NDUFC2 Rabbit mAb

Catalog No: #52451



Package Size: #52451-1 50ul #52451-2 100ul

Orders: order@signalwayantibody.com
Support: tech@signalwayantibody.com

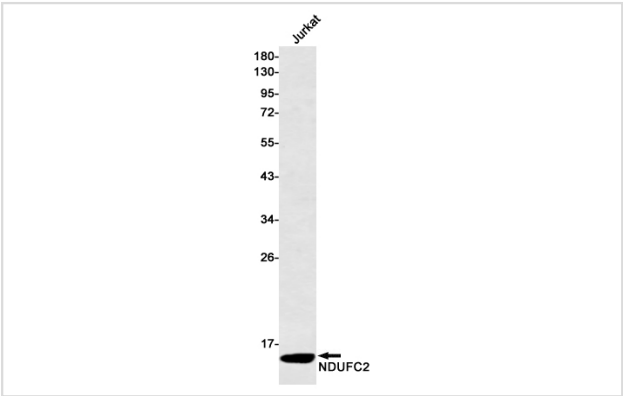
Description

Product Name	NDUFC2 Rabbit mAb
Host Species	Recombinant Rabbit
Clonality	Monoclonal antibody
Clone No.	S05-2C2
Isotype	Rabbit IgG
Purification	Affinity Purified
Applications	WB IHC
Species Reactivity	Human
Immunogen Description	Recombinant protein of human NDUFC2
Conjugates	Unconjugated
Modification	Unmodification
Other Names	HLC-1; B14.5b; NADH2; CI-B14.5b
Accession No.	Swiss-Prot:O95298GeneID:4718
Uniprot	O95298
GeneID	4718
Calculated MW	Calculated MW: 14 kDa; Observed MW: 14 kDa
Concentration	0.3 mg/ml
Formulation	50mM Tris-Glycine(pH 7.4), 0.15M NaCl, 40% Glycerol, 0.01% Sodium azide and 0.05% BSA
Storage	Store at 4°C short term. Aliquot and store at -20°C long term. Avoid freeze/thaw cycles.

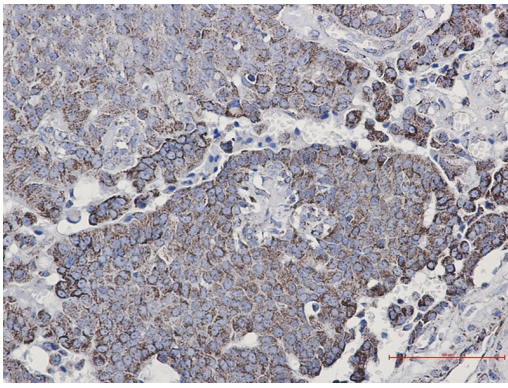
Application Details

WB: 1/1000; IHC: 1/20-1/50;

Images



Western blot detection of NDUFC2 in Jurkat cell lysates using NDUFC2 Rabbit mAb(1:500 diluted).Predicted band size:14kDa.Observed band size:14kDa.



Immunohistochemistry of NDUFC2 in paraffin-embedded Human breast cancer tissue using NDUFC2 Rabbit mAb at dilution 1/50

Background

Swiss-Prot Acc.O95298.Accessory subunit of the mitochondrial membrane respiratory chain NADH dehydrogenase (Complex I), that is believed not to be involved in catalysis. Complex I functions in the transfer of electrons from NADH to the respiratory chain. The immediate electron acceptor for the enzyme is believed to be ubiquinone.

Note: This product is for in vitro research use only