

RNA Polymerases I/II/III Subunit ABC1 Rabbit mAb

Catalog No: #52516



Package Size: #52516-1 50ul #52516-2 100ul

Orders: order@signalwayantibody.com
Support: tech@signalwayantibody.com

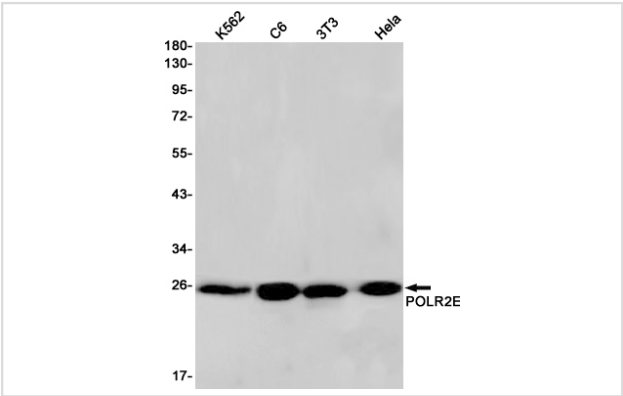
Description

Product Name	RNA Polymerases I/II/III Subunit ABC1 Rabbit mAb
Host Species	Recombinant Rabbit
Clonality	Monoclonal antibody
Clone No.	S05-8J5
Isotype	Rabbit IgG
Purification	Affinity Purified
Applications	WB IHC
Species Reactivity	Human,Mouse,Rat
Immunogen Description	A synthetic peptide of human POLR2E
Conjugates	Unconjugated
Modification	Unmodification
Other Names	RPB5; XAP4; RPABC1; hRPB25; hsRPB5
Accession No.	Swiss-Prot:P19388GenelD:5434
Uniprot	P19388
GenelD	5434
Calculated MW	Calculated MW: 25 kDa; Observed MW: 25 kDa
Concentration	0.3 mg/ml
Formulation	50mM Tris-Glycine(pH 7.4), 0.15M NaCl, 40% Glycerol, 0.01% Sodium azide and 0.05% BSA
Storage	Store at 4°C short term. Aliquot and store at -20°C long term. Avoid freeze/thaw cycles.

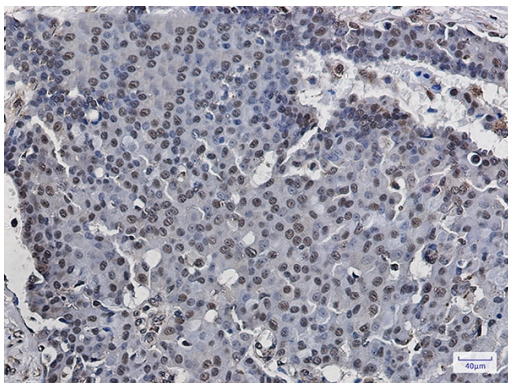
Application Details

WB: 1/2000; IHC: 1/20;

Images



Western blot detection of POLR2E in K562,C6,3T3,Hela cell lysates using POLR2E Rabbit mAb(1:1000 diluted).Predicted band size:25kDa.Observed band size:25kDa.



Immunohistochemistry of POLR2E in paraffin-embedded Human breast cancer tissue using POLR2E Rabbit mAb at dilution 1/20

Background

Swiss-Prot Acc.P19388.DNA-dependent RNA polymerase catalyzes the transcription of DNA into RNA using the four ribonucleoside triphosphates as substrates. Common component of RNA polymerases I, II and III which synthesize ribosomal RNA precursors, mRNA precursors and many functional non-coding RNAs, and small RNAs, such as 5S rRNA and tRNAs, respectively. Pol II is the central component of the basal RNA polymerase II transcription machinery. Pols are composed of mobile elements that move relative to each other. In Pol II, POLR2E/RPB5 is part of the lower jaw surrounding the central large cleft and thought to grab the incoming DNA template. Seems to be the major component in this process .

Note: This product is for in vitro research use only