

Proteasome beta 9 Rabbit mAb

Catalog No: #52527



Package Size: #52527-1 50ul #52527-2 100ul

Orders: order@signalwayantibody.com  
Support: tech@signalwayantibody.com

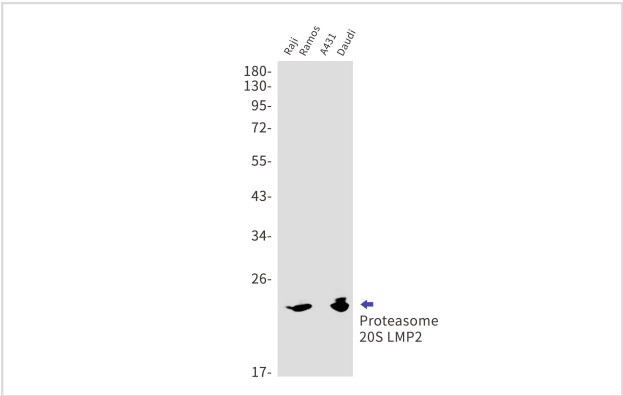
Description

Product Name	Proteasome beta 9 Rabbit mAb
Host Species	Recombinant Rabbit
Clonality	Monoclonal antibody
Clone No.	S04-9C8
Isotype	Rabbit IgG
Purification	Affinity Purified
Applications	WB
Species Reactivity	Human,Mouse,Rat
Immunogen Description	A synthetic peptide of human Proteasome 20S LMP2
Conjugates	Unconjugated
Modification	Unmodification
Other Names	LMP2; PRAAS3; PSMB6i; RING12; beta1i
Accession No.	Swiss-Prot:P28065GenelD:5698
Uniprot	P28065
GenelD	5698
Calculated MW	Calculated MW: 23 kDa; Observed MW: 23 kDa
Concentration	0.3 mg/ml
Formulation	50mM Tris-Glycine(pH 7.4), 0.15M NaCl, 40% Glycerol, 0.01% Sodium azide and 0.05% BSA
Storage	Store at 4°C short term. Aliquot and store at -20°C long term. Avoid freeze/thaw cycles.

Application Details

WB: 1/2000-1/10000;

Images



Western blot detection of Proteasome 20S LMP2 in Raji,Ramos,A431 and Daudi lysates using Proteasome 20S LMP2 antibody.Predicted band size:23kDa.Observed band size:23kDa.

## Background

---

Swiss-Prot Acc.P28065. The proteasome is a multicatalytic proteinase complex which is characterized by its ability to cleave peptides with Arg, Phe, Tyr, Leu, and Glu adjacent to the leaving group at neutral or slightly basic pH. The proteasome has an ATP-dependent proteolytic activity. This subunit is involved in antigen processing to generate class I binding peptides. Replacement of PSMB6 by PSMB9 increases the capacity of the immunoproteasome to cleave model peptides after hydrophobic and basic residues.

---

Note: This product is for in vitro research use only