

SPINK5 Rabbit mAb

Catalog No: #52590

Package Size: #52590-1 50ul #52590-2 100ul

Orders: order@signalwayantibody.comSupport: tech@signalwayantibody.com

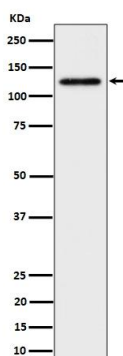
Description

Product Name	SPINK5 Rabbit mAb
Clone No.	S06-6C1
Isotype	Rabbit IgG
Purification	Affinity Purified
Applications	WB
Species Reactivity	Human,Mouse,Rat
Immunogen Description	A synthetic peptide of human SPINK5
Conjugates	Unconjugated
Modification	Unmodification
Other Names	LEKTI; NETS; SPINK5; VAKTI;
Accession No.	Swiss-Prot:Q9NQ38GeneID:11005
Uniprot	Q9NQ38
GeneID	11005
Calculated MW	Calculated MW: 121 kDa; Observed MW: 121 kDa
Formulation	Rabbit IgG in phosphate buffered saline , pH 7.4, 150mM NaCl, 0.02% sodium azide and 50% glycerol.
Storage	Store at 4°C short term. Aliquot and store at -20°C long term. Avoid freeze/thaw cycles.

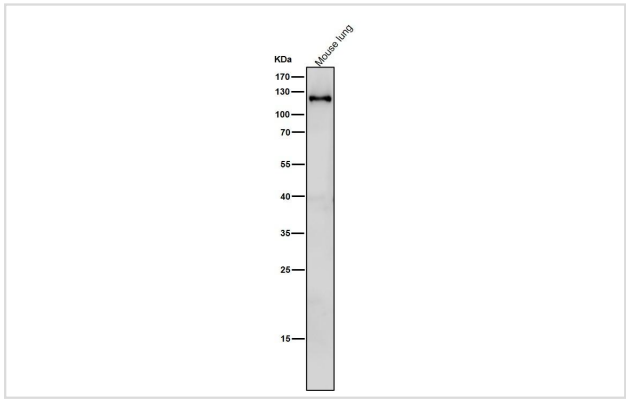
Application Details

WB 1:500-1:2000

Images



Western blot analysis of SPINK5 / LEKTI expression in HeLa cell lysate.



All lanes use the Antibody at 1:1K dilution for 1 hour at room temperature.

Background

Serine protease inhibitor, probably important for the anti-inflammatory and/or antimicrobial protection of mucous epithelia. Contribute to the integrity and protective barrier function of the skin by regulating the activity of defense-activating and desquamation-involved proteases. Inhibits KLK5, it's major target, in a pH-dependent manner. Inhibits KLK7, KLK14 CASP14, and trypsin.

Note: This product is for in vitro research use only