

SPON2 Rabbit mAb

Catalog No: #52591



Package Size: #52591-1 50ul #52591-2 100ul

Orders: [order@signalwayantibody.com](mailto:order@signalwayantibody.com)  
Support: [tech@signalwayantibody.com](mailto:tech@signalwayantibody.com)

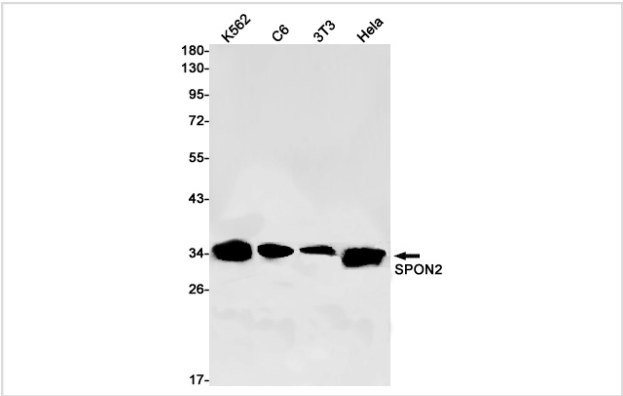
Description

|                       |                                                                                          |
|-----------------------|------------------------------------------------------------------------------------------|
| Product Name          | SPON2 Rabbit mAb                                                                         |
| Host Species          | Recombinant Rabbit                                                                       |
| Clonality             | Monoclonal antibody                                                                      |
| Clone No.             | S06-4H7                                                                                  |
| Isotype               | Rabbit IgG                                                                               |
| Purification          | Affinity Purified                                                                        |
| Applications          | WB                                                                                       |
| Species Reactivity    | Human,Mouse,Rat                                                                          |
| Immunogen Description | A synthetic peptide of human SPON2                                                       |
| Conjugates            | Unconjugated                                                                             |
| Modification          | Unmodification                                                                           |
| Other Names           | DIL1; DIL-1; MINDIN; M-SPONDIN                                                           |
| Accession No.         | Swiss-Prot:Q9BUD6GeneID:10417                                                            |
| Uniprot               | Q9BUD6                                                                                   |
| GeneID                | 10417                                                                                    |
| Calculated MW         | Calculated MW: 36 kDa; Observed MW: 36 kDa                                               |
| Concentration         | 0.3 mg/ml                                                                                |
| Formulation           | 50mM Tris-Glycine(pH 7.4), 0.15M NaCl, 40% Glycerol, 0.01% Sodium azide and 0.05% BSA    |
| Storage               | Store at 4°C short term. Aliquot and store at -20°C long term. Avoid freeze/thaw cycles. |

Application Details

WB: 1/1000;

Images



Western blot detection of SPON2 in K562,C6,3T3,Hela cell lysates using SPON2 Rabbit mAb(1:1000 diluted).Predicted band size:36kDa.Observed band size:36kDa.

## Background

---

Swiss-Prot Acc.Q9BUD6.Spondin-2. Cell adhesion protein that promotes adhesion and outgrowth of hippocampal embryonic neurons. Binds directly to bacteria and their components and functions as an opsonin for macrophage phagocytosis of bacteria. Essential in the initiation of the innate immune response and represents a unique pattern-recognition molecule in the ECM for microbial pathogens (By similarity).

Binds bacterial lipopolysaccharide (LPS).

---

Note: This product is for in vitro research use only