

# Transcriptional Enhancer Factor TEF Rabbit mAb

Catalog No: #52616



Package Size: #52616-1 50ul #52616-2 100ul

Orders: [order@signalwayantibody.com](mailto:order@signalwayantibody.com)  
Support: [tech@signalwayantibody.com](mailto:tech@signalwayantibody.com)

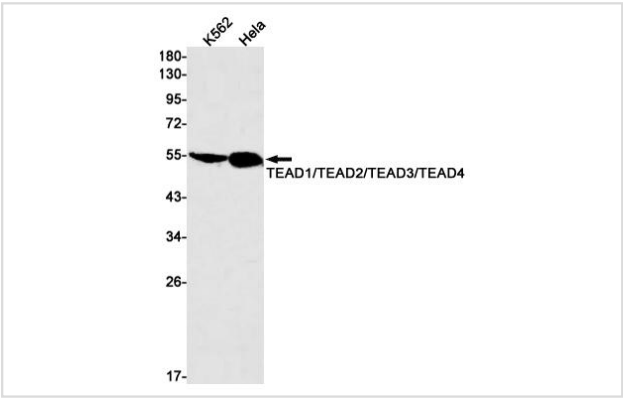
## Description

Product Name	Transcriptional Enhancer Factor TEF Rabbit mAb
Clone No.	S09-9D9
Isotype	Rabbit IgG
Purification	Affinity Purified
Applications	WB
Species Reactivity	Human
Immunogen Description	Recombinant protein of human TEAD4
Conjugates	Unconjugated
Modification	Unmodification
Other Names	DTEF 1; NTEF 1; TCF13; TEAD1; TEAD2; TEAD3; TEAD4; TEAD5; TEF1; TEF4; TEF5;
Accession No.	Swiss-Prot:Q15561GeneID:7004
Uniprot	Q15561
GeneID	7004
Calculated MW	Calculated MW: 49 kDa; Observed MW: 54 kDa
Concentration	0.3 mg/ml
Formulation	50mM Tris-Glycine(pH 7.4), 0.15M NaCl, 40% Glycerol, 0.01% Sodium azide and 0.05% BSA
Storage	Store at 4°C short term. Aliquot and store at -20°C long term. Avoid freeze/thaw cycles.

## Application Details

WB: 1oO 500-1oO 1000

## Images



Western blot analysis of TEAD1/TEAD2/TEAD3/TEAD4 in K562, HeLa lysates using Transcriptional Enhancer Factor TEF antibody.

## Background

Transcription factor which plays a key role in the Hippo signaling pathway, a pathway involved in organ size control and tumor suppression by restricting proliferation and promoting apoptosis. The core of this pathway is composed of a kinase cascade wherein MST1/MST2, in complex with its

regulatory protein SAV1, phosphorylates and activates LATS1/2 in complex with its regulatory protein MOB1, which in turn phosphorylates and inactivates YAP1 oncoprotein and WWTR1/TAZ. Acts by mediating gene expression of YAP1 and WWTR1/TAZ, thereby regulating cell proliferation, migration and epithelial mesenchymal transition (EMT) induction. Binds specifically and non-cooperatively to the Sph and GT-IIC 'enhancers' (5'-GTGGAATGT-3') and activates transcription. Binds to the M-CAT motif.

---

Note: This product is for in vitro research use only