

MMS21 Antibody

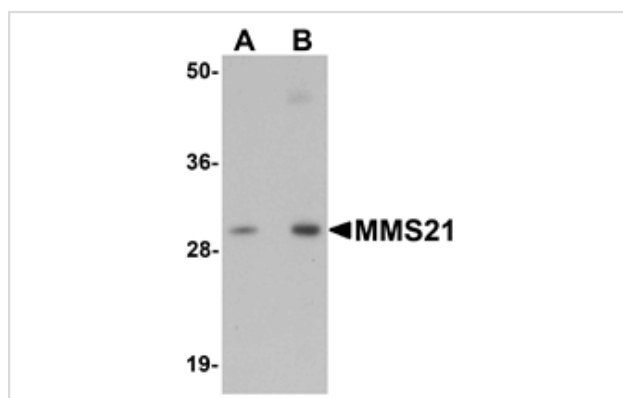
Catalog No: #25119

Orders: order@signalwayantibody.comSupport: tech@signalwayantibody.com

Description

Product Name	MMS21 Antibody
Host Species	Rabbit
Clonality	Polyclonal
Purification	Affinity chromatography purified via peptide column
Applications	ELISA WB
Species Reactivity	Hu Ms Rt
Immunogen Type	Peptide
Immunogen Description	Raised against a 15 amino acid peptide near the carboxy terminus of human MMS21.
Target Name	MMS21
Other Names	E3 SUMO-protein ligase NSE2, Non-SMC element 2, NSMCE2, MMS21 homolog
Accession No.	Swiss-Prot:Q96MF7 Gene ID:286053
Uniprot	Q96MF7
GeneID	286053;
Concentration	1mg/ml
Formulation	Supplied in PBS containing 0.02% sodium azide.
Storage	Can be stored at -20°C, stable for one year. As with all antibodies care should be taken to avoid repeated freeze thaw cycles. Antibodies should not be exposed to prolonged high temperatures.

Images



Western blot analysis of MMS21 in 293 cell lysate with MMS21 antibody at (A) 0.5 and (B) 1 ug/mL.

Background

MMS21, also known as NSE2, is a SUMO ligase that in combination with the SMC5/6 complex is required for the prevention of DNA damage induced apoptosis by facilitating DNA repair in human cells. MMS21-dependent sumoylation is integral and important to the cohesion mechanism and mitotic progression; this function appears to be independent of SMC6. MMS21 mediates SUMO attachment to various proteins such as SMC6L1 and TRAX, and possibly the cohesin components RAD21 and STAG2.

Note: This product is for in vitro research use only