

Calumenin Rabbit mAb

Catalog No: #52731



Package Size: #52731-1 50ul #52731-2 100ul

Orders: order@signalwayantibody.com
Support: tech@signalwayantibody.com

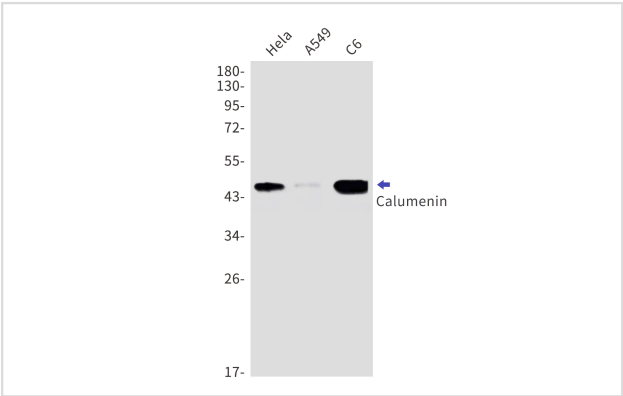
Description

Product Name	Calumenin Rabbit mAb
Host Species	Recombinant Rabbit
Clonality	Monoclonal antibody
Clone No.	S05-1E7
Isotype	IgG
Purification	Affinity Purified
Applications	WB IHC
Species Reactivity	Human,Mouse,Rat
Immunogen Description	A synthetic peptide of human Calumenin
Conjugates	Unconjugated
Modification	Unmodification
Other Names	Crocalbin; IEF SSP 9302
Accession No.	Swiss-Prot:O43852GeneID:813
Uniprot	O43852
GeneID	813
Calculated MW	Calculated MW:37 kDa,Observed MW:47 kDa
Concentration	0.3 mg/ml
Formulation	50mM Tris-Glycine(pH 7.4), 0.15M NaCl, 40% Glycerol, 0.01% Sodium azide and 0.05% BSA
Storage	Store at 4°C short term. Aliquot and store at -20°C long term. Avoid freeze/thaw cycles.

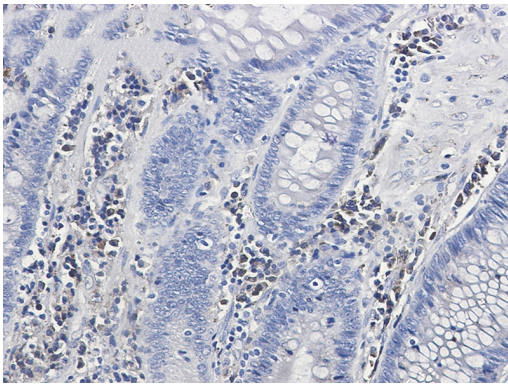
Application Details

WB: 1/1000 IHC: 1/50

Images



Western blot detection of Calumenin in HeLa,A549,C6 cell lysates using Calumenin Rabbit mAb(1:1000 diluted).Predicted band size:37kDa.Observed band size:47kDa.



Immunohistochemistry of Calumenin in paraffin-embedded Human colon cancer tissue using Calumenin Rabbit mAb at dilution 1/50

Background

The product of this gene is a calcium-binding protein localized in the endoplasmic reticulum (ER) and it is involved in such ER functions as protein folding and sorting. This protein belongs to a family of multiple EF-hand proteins (CERC) that include reticulocalbin, ERC-55, and Cab45 and the product of this gene. Alternatively spliced transcript variants encoding different isoforms have been identified. [provided by RefSeq, Oct 2008]

Note: This product is for in vitro research use only