

Clathrin Heavy Chain Rabbit mAb

Catalog No: #52739



Package Size: #52739-1 50ul #52739-2 100ul

Orders: order@signalwayantibody.com
Support: tech@signalwayantibody.com

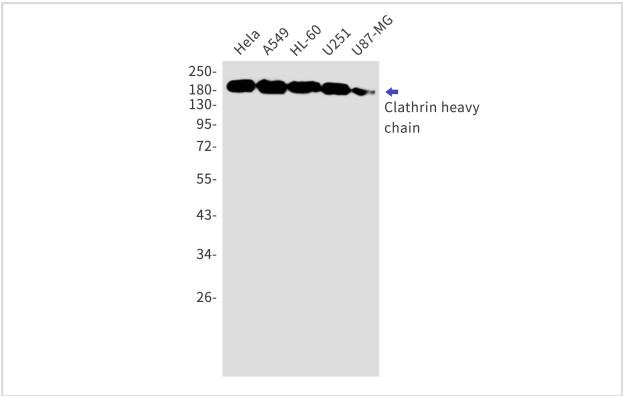
Description

Product Name	Clathrin Heavy Chain Rabbit mAb
Host Species	Recombinant Rabbit
Clonality	Monoclonal antibody
Clone No.	S02-6C4
Isotype	IgG
Purification	Affinity Purified
Applications	WB IHC
Species Reactivity	Human,Mouse,Rat
Immunogen Description	A synthetic peptide of human Clathrin heavy chain
Conjugates	Unconjugated
Modification	Unmodification
Other Names	Hc; CHC; CHC17; MRD56; CLH-17; CLTCL2
Accession No.	Swiss-Prot:Q00610GeneID:1213
Uniprot	Q00610
GeneID	1213
Calculated MW	Calculated MW:192 kDa,Observed MW:192 kDa
Concentration	0.3 mg/ml
Formulation	50mM Tris-Glycine(pH 7.4), 0.15M NaCl, 40% Glycerol, 0.01% Sodium azide and 0.05% BSA
Storage	Store at 4°C short term. Aliquot and store at -20°C long term. Avoid freeze/thaw cycles.

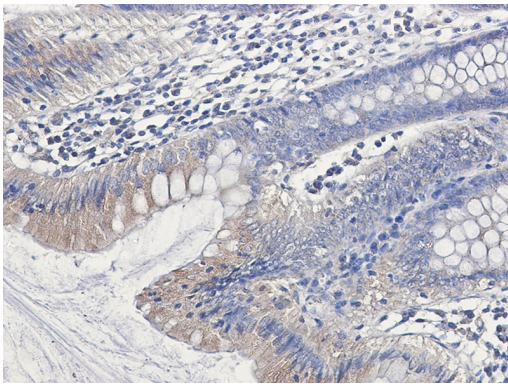
Application Details

WB: 1/2000-1/10000 IHC: 1/20

Images



Western blot detection of Clathrin heavy chain in HeLa,A549,HL-60,U251,U87-MG cell lysates using Clathrin heavy chain Rabbit mAb(1:1000 diluted).Predicted band size:192kDa.Observed band size:192kDa.



Immunohistochemistry of Clathrin heavy chain in paraffin-embedded Human colon cancer tissue using Clathrin heavy chain Rabbit mAb at dilution 1/50

Background

Clathrin is the major protein of the polyhedral coat of coated pits and vesicles. Two different adapter protein complexes link the clathrin lattice either to the plasma membrane or to the trans-Golgi network. Acts as component of the TACC3/ch-TOG/clathrin complex proposed to contribute to stabilization of kinetochore fibers of the mitotic spindle by acting as inter-microtubule bridge (PubMed:15858577, PubMed:16968737, PubMed:21297582).

The TACC3/ch-TOG/clathrin complex is required for the maintenance of kinetochore fiber tension (PubMed:23532825).

Plays a role in early autophagosome formation (PubMed:20639872).

Note: This product is for in vitro research use only