

HLF Rabbit mAb

Catalog No: #52775



Package Size: #52775-1 50ul #52775-2 100ul

Orders: order@signalwayantibody.com
Support: tech@signalwayantibody.com

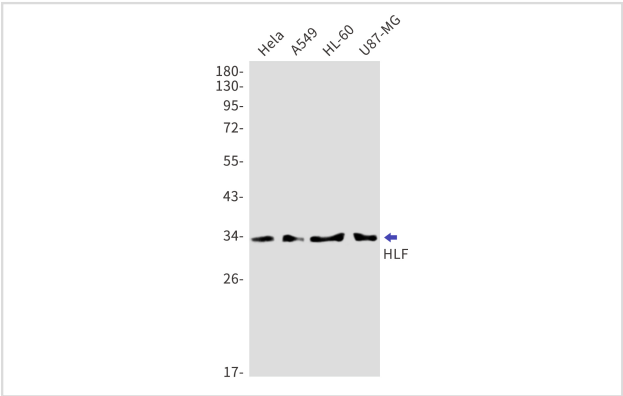
Description

Product Name	HLF Rabbit mAb
Host Species	Recombinant Rabbit
Clonality	Monoclonal antibody
Clone No.	S02-4B7
Isotype	IgG
Purification	Affinity Purified
Applications	WB
Species Reactivity	Human,Mouse,Rat
Immunogen Description	A synthetic peptide of human HLF
Conjugates	Unconjugated
Modification	Unmodification
Other Names	Hepatic leukemia factor
Accession No.	Swiss-Prot:Q16534GeneID:3131
Uniprot	Q16534
GeneID	3131
Calculated MW	Calculated MW:33 kDa,Observed MW:33 kDa
Concentration	0.3 mg/ml
Formulation	50mM Tris-Glycine(pH 7.4), 0.15M NaCl, 40% Glycerol, 0.01% Sodium azide and 0.05% BSA
Storage	Store at 4°C short term. Aliquot and store at -20°C long term. Avoid freeze/thaw cycles.

Application Details

WB: 1/1000

Images



Western blot detection of HLF in HeLa,A549,HL-60,U87-MG cell lysates using HLF Rabbit mAb(1:1000 diluted).Predicted band size:33kDa.Observed band size:33kDa.

Background

This gene encodes a member of the proline and acidic-rich (PAR) protein family, a subset of the bZIP transcription factors. The encoded protein forms homodimers or heterodimers with other PAR family members and binds sequence-specific promoter elements to activate transcription. Chromosomal translocations fusing portions of this gene with the E2A gene cause a subset of childhood B-lineage acute lymphoid leukemias. Alternatively spliced transcript variants have been described, but their biological validity has not been determined.

Note: This product is for in vitro research use only