

Ihh Rabbit mAb

Catalog No: #52780



Package Size: #52780-1 50ul #52780-2 100ul

Orders: order@signalwayantibody.com
Support: tech@signalwayantibody.com

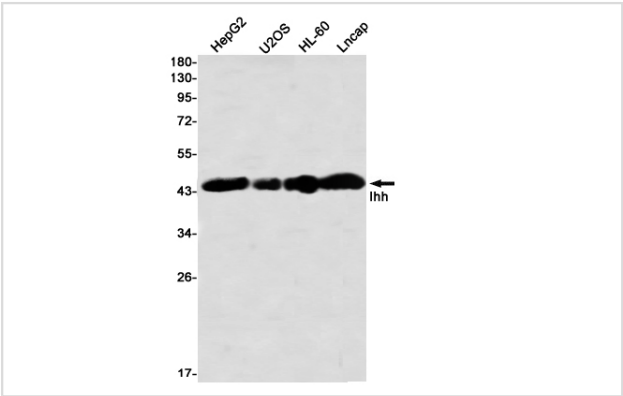
Description

Product Name	Ihh Rabbit mAb
Host Species	Recombinant Rabbit
Clonality	Monoclonal antibody
Clone No.	S03-3F2
Isotype	IgG
Purification	Affinity Purified
Applications	WB
Species Reactivity	Human,Mouse,Rat
Immunogen Description	A synthetic peptide of human Ihh
Conjugates	Unconjugated
Modification	Unmodification
Other Names	BDA1; HHG2
Accession No.	Swiss-Prot:Q14623GeneID:3549
Uniprot	Q14623
GeneID	3549
Calculated MW	Calculated MW:45 kDa,Observed MW:45 kDa
Concentration	0.3 mg/ml
Formulation	50mM Tris-Glycine(pH 7.4), 0.15M NaCl, 40% Glycerol, 0.01% Sodium azide and 0.05% BSA
Storage	Store at 4°C short term. Aliquot and store at -20°C long term. Avoid freeze/thaw cycles.

Application Details

WB: 1/2000

Images



Western blot detection of Ihh in HepG2,U2OS,HL-60,Lncap using Ihh Rabbit mAb(1:1000 diluted)

Background

Intercellular signal essential for a variety of patterning events during development. Binds to the patched (PTC) receptor, which functions in association with smoothened (SMO), to activate the transcription of target genes. Implicated in endochondral ossification: may regulate the balance between growth and ossification of the developing bones. Induces the expression of parathyroid hormone-related protein (PTHrP) (By similarity).

Note: This product is for in vitro research use only