

KMT4 Rabbit mAb

Catalog No: #52788



Package Size: #52788-1 50ul #52788-2 100ul

Orders: order@signalwayantibody.com  
Support: tech@signalwayantibody.com

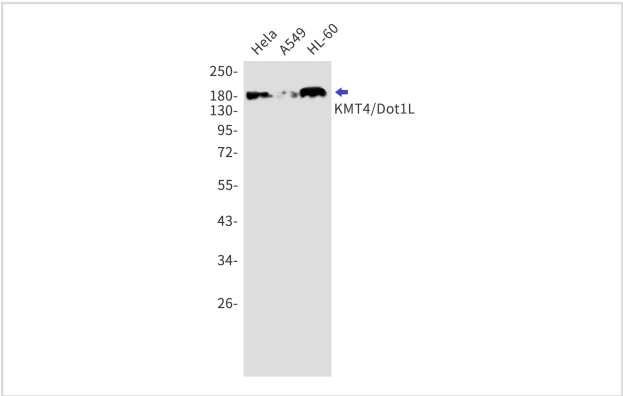
Description

Product Name	KMT4 Rabbit mAb
Host Species	Recombinant Rabbit
Clonality	Monoclonal antibody
Clone No.	S01-7F6
Isotype	IgG
Purification	Affinity Purified
Applications	WB
Species Reactivity	Human,Mouse,Rat
Immunogen Description	Recombinant protein of human KMT4/Dot1L
Conjugates	Unconjugated
Modification	Unmodification
Other Names	DOT 1; DOT1L; KMT4; Histone methyltransferase DOT1L; H3 lysine-79 specific;
Accession No.	Swiss-Prot:Q8TEK3GeneID:84444
Uniprot	Q8TEK3
GeneID	84444
Calculated MW	Calculated MW:165 kDa,Observed MW:185 kDa
Concentration	0.3 mg/ml
Formulation	50mM Tris-Glycine(pH 7.4), 0.15M NaCl, 40% Glycerol, 0.01% Sodium azide and 0.05% BSA
Storage	Store at 4°C short term. Aliquot and store at -20°C long term. Avoid freeze/thaw cycles.

Application Details

WB: 1/1000

Images



Western blot detection of KMT4/Dot1L in HeLa,A549,HL-60 cell lysates using KMT4/Dot1L Rabbit mAb(1:1000 diluted).Predicted band size:165kDa.Observed band size:185kDa.

## Background

---

The protein encoded by this gene is a histone methyltransferase that methylates lysine-79 of histone H3. It is inactive against free core histones, but shows significant histone methyltransferase activity against nucleosomes. [provided by RefSeq, Aug 2011]

---

Note: This product is for in vitro research use only