

LTK Rabbit mAb

Catalog No: #52792



Package Size: #52792-1 50ul #52792-2 100ul

Orders: [order@signalwayantibody.com](mailto:order@signalwayantibody.com)  
Support: [tech@signalwayantibody.com](mailto:tech@signalwayantibody.com)

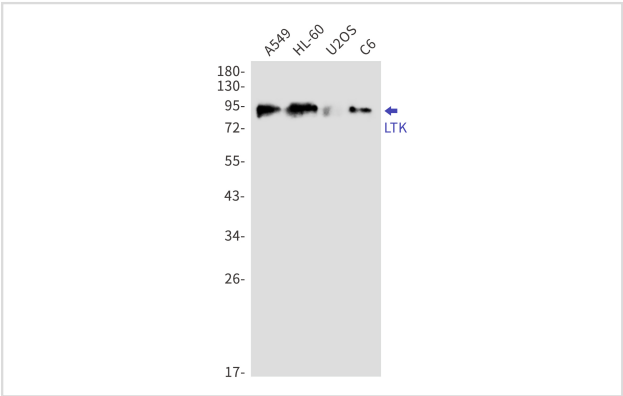
Description

Product Name	LTK Rabbit mAb
Host Species	Recombinant Rabbit
Clonality	Monoclonal antibody
Clone No.	S02-8A4
Isotype	IgG
Purification	Affinity Purified
Applications	WB IHC
Species Reactivity	Human, Rat
Immunogen Description	A synthetic peptide of human LTK
Conjugates	Unconjugated
Modification	Unmodification
Other Names	TYK1
Accession No.	Swiss-Prot:P29376GenelD:4058
Uniprot	P29376
GenelD	4058
Calculated MW	Calculated MW:92 kDa,Observed MW:92 kDa
Concentration	0.3 mg/ml
Formulation	50mM Tris-Glycine(pH 7.4), 0.15M NaCl, 40% Glycerol, 0.01% Sodium azide and 0.05% BSA
Storage	Store at 4°C short term. Aliquot and store at -20°C long term. Avoid freeze/thaw cycles.

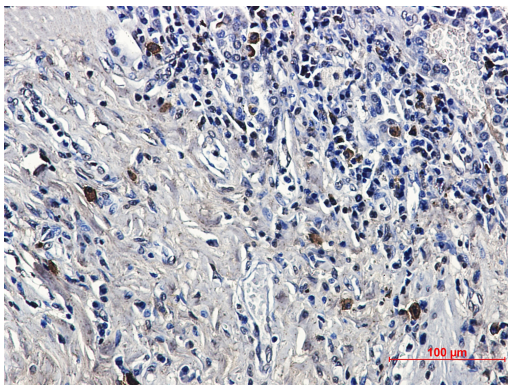
Application Details

WB: 1/1000 IHC: 1/50

Images



Western blot detection of LTK in A549,HL-60,U2OS,C6 cell lysates using LTK Rabbit mAb(1:1000 diluted).Predicted band size:92kDa.Observed band size:92kDa.



Immunohistochemical of LTK in Human lung cancer tissue using LTK antibody at dilution 1/50

## Background

Receptor with a tyrosine-protein kinase activity. The exact function of this protein is not known. Studies with chimeric proteins (replacing its extracellular region with that of several known growth factor receptors, such as EGFR and CSFIR) demonstrate its ability to promote growth and specifically neurite outgrowth, and cell survival. Signaling appears to involve the PI3 kinase pathway. Involved in regulation of the secretory pathway involving endoplasmic reticulum (ER) export sites (ERESs) and ER to Golgi transport.

Note: This product is for in vitro research use only