

## MTAP Rabbit mAb

Catalog No: #52812

Package Size: #52812-1 50ul #52812-2 100ul

Orders: [order@signalwayantibody.com](mailto:order@signalwayantibody.com)Support: [tech@signalwayantibody.com](mailto:tech@signalwayantibody.com)

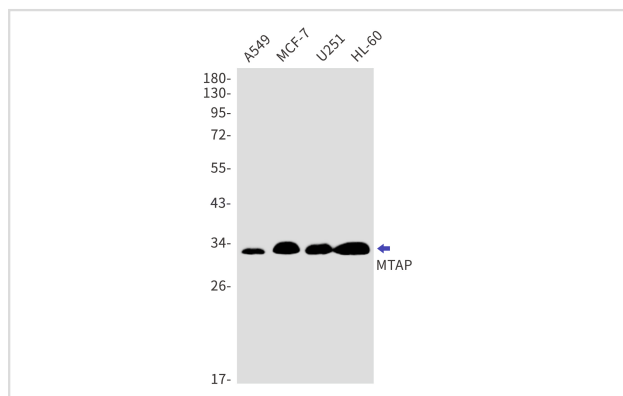
## Description

Product Name	MTAP Rabbit mAb
Host Species	Recombinant Rabbit
Clonality	Monoclonal antibody
Clone No.	S07-5A0
Isotype	IgG
Purification	Affinity Purified
Applications	WB
Species Reactivity	Human,Mouse,Rat
Immunogen Description	A synthetic peptide of human MTAP
Conjugates	Unconjugated
Modification	Unmodification
Other Names	BDMF; MSAP; DMSFH; LGMBF; DMSMFH; c86fus; HEL-249
Accession No.	Swiss-Prot:Q13126GeneID:4507
Uniprot	Q13126
GeneID	4507
Calculated MW	Calculated MW:31 kDa,Observed MW:31 kDa
Concentration	0.3 mg/ml
Formulation	50mM Tris-Glycine(pH 7.4), 0.15M NaCl, 40% Glycerol, 0.01% Sodium azide and 0.05% BSA
Storage	Store at 4°C short term. Aliquot and store at -20°C long term. Avoid freeze/thaw cycles.

## Application Details

WB: 1/1000

## Images



Western blot detection of MTAP in A549,MCF-7,U251,HL-60 cell lysates using MTAP Rabbit mAb(1:1000 diluted).Predicted band size:31kDa.Observed band size:31kDa.

## Background

---

This gene encodes an enzyme that plays a major role in polyamine metabolism and is important for the salvage of both adenine and methionine. The encoded enzyme is deficient in many cancers because this gene and the tumor suppressor p16 gene are co-deleted. Multiple alternatively spliced transcript variants have been described for this gene, but their full-length natures remain unknown. [provided by RefSeq, Jul 2008]

---

Note: This product is for in vitro research use only