

SPI1 Rabbit mAb

Catalog No: #52847



Package Size: #52847-1 50ul #52847-2 100ul

Orders: order@signalwayantibody.com
Support: tech@signalwayantibody.com

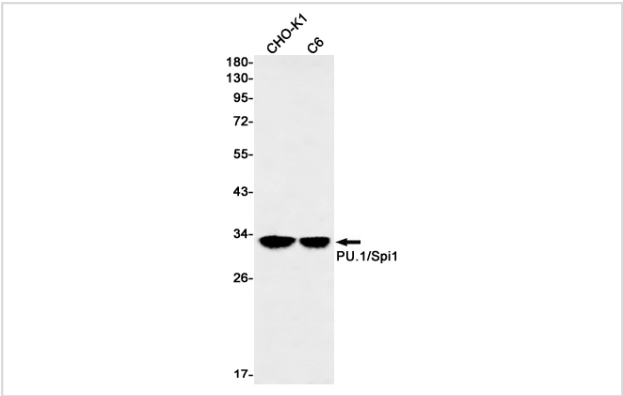
Description

| | |
|-----------------------|--|
| Product Name | SPI1 Rabbit mAb |
| Host Species | Recombinant Rabbit |
| Clonality | Monoclonal antibody |
| Clone No. | S02-1D7 |
| Isotype | IgG |
| Purification | Affinity Purified |
| Applications | WB IF |
| Species Reactivity | Mouse |
| Immunogen Description | A synthetic peptide of mouse PU.1/Spi1 |
| Conjugates | Unconjugated |
| Modification | Unmodification |
| Other Names | Dis1; PU.1; Dis-1; Sfpi1; Spi-1; Sfpi-1; Tcfpu1; Tfpu.1 |
| Accession No. | Swiss-Prot:P17433GenelD:20375 |
| Uniprot | P17433 |
| GenelD | 20375 |
| Calculated MW | Calculated MW:31 kDa,Observed MW:31 kDa |
| Concentration | 0.3 mg/ml |
| Formulation | 50mM Tris-Glycine(pH 7.4), 0.15M NaCl, 40% Glycerol, 0.01% Sodium azide and 0.05% BSA |
| Storage | Store at 4°C short term. Aliquot and store at -20°C long term. Avoid freeze/thaw cycles. |

Application Details

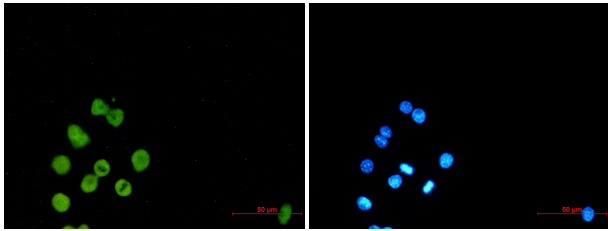
WB: 1/1000 ICC/IF: 1/50

Images



Western blot detection of PU.1/Spi1 in CHO-K1,C6 cell lysates using PU.1/Spi1 Rabbit mAb(1:1000 diluted).Predicted band size:31kDa.Observed band size:31kDa.

Immunocytochemistry of PU.1/Spi1 (green) in Raw264.7 using PU.1/Spi1 antibody at dilution 1/50, and DAPI(blue)



Background

Binds to the PU-box, a purine-rich DNA sequence (5'-GAGGAA-3') that can act as a lymphoid-specific enhancer. This protein is a transcriptional activator that may be specifically involved in the differentiation or activation of macrophages or B-cells. Also binds RNA and may modulate pre-mRNA splicing.

Note: This product is for in vitro research use only