

VPS35 Rabbit mAb

Catalog No: #52886



Package Size: #52886-1 50ul #52886-2 100ul

Orders: [order@signalwayantibody.com](mailto:order@signalwayantibody.com)  
Support: [tech@signalwayantibody.com](mailto:tech@signalwayantibody.com)

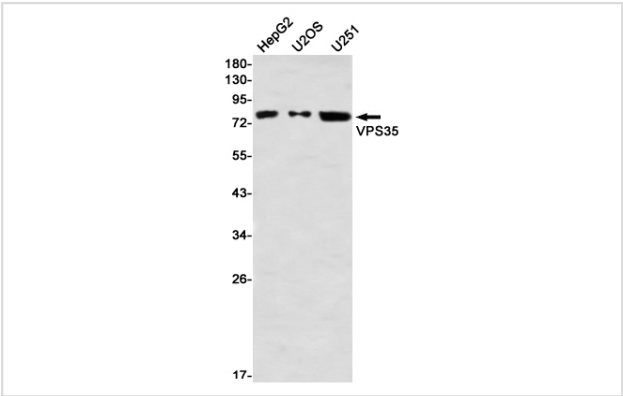
Description

Product Name	VPS35 Rabbit mAb
Host Species	Recombinant Rabbit
Clonality	Monoclonal antibody
Clone No.	S03-6E1
Isotype	IgG
Purification	Affinity Purified
Applications	WB IHC
Species Reactivity	Human,Mouse,Rat
Immunogen Description	A synthetic peptide of human VPS35
Conjugates	Unconjugated
Modification	Unmodification
Other Names	hVPS35; MEM3; PARK17; VPS35;
Accession No.	Swiss-Prot:Q96QK1GeneID:55737
Uniprot	Q96QK1
GeneID	55737
Calculated MW	Calculated MW:92 kDa,Observed MW:81 kDa
Concentration	0.3 mg/ml
Formulation	50mM Tris-Glycine(pH 7.4), 0.15M NaCl, 40% Glycerol, 0.01% Sodium azide and 0.05% BSA
Storage	Store at 4°C short term. Aliquot and store at -20°C long term. Avoid freeze/thaw cycles.

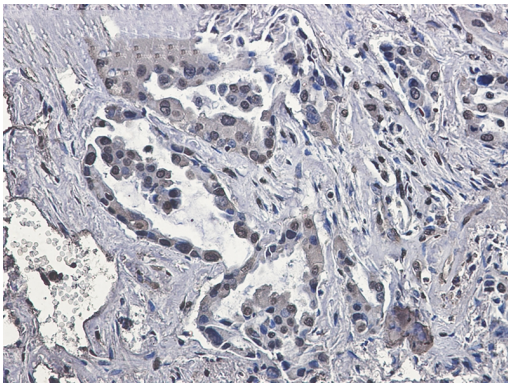
Application Details

WB: 1/2000-1/10000 IHC: 1/20

Images



Western blot detection of VPS35 in HepG2,U2OS,U251 using VPS35 Rabbit mAb(1:1000 diluted)



Immunohistochemistry of VPS35 in paraffin-embedded Human lung cancer tissue using VPS35 Rabbit mAb at dilution 1/50

## Background

Acts as component of the retromer cargo-selective complex (CSC). The CSC is believed to be the core functional component of retromer or respective retromer complex variants acting to prevent missorting of selected transmembrane cargo proteins into the lysosomal degradation pathway. The recruitment of the CSC to the endosomal membrane involves RAB7A and SNX3. The CSC seems to associate with the cytoplasmic domain of cargo proteins predominantly via VPS35; however, these interactions seem to be of low affinity and retromer SNX proteins may also contribute to cargo selectivity thus questioning the classical function of the CSC. The SNX-BAR retromer mediates retrograde transport of cargo proteins from endosomes to the trans-Golgi network (TGN) and is involved in endosome-to-plasma membrane transport for cargo protein recycling. The SNX3-retromer mediates the retrograde endosome-to-TGN transport of WLS distinct from the SNX-BAR retromer pathway (PubMed:30213940).

Note: This product is for in vitro research use only