

# AP2M1 Rabbit Polyclonal Antibody

Catalog No: #53759



Package Size: #53759-1 50ul #53759-2 100ul

Orders: [order@signalwayantibody.com](mailto:order@signalwayantibody.com)  
Support: [tech@signalwayantibody.com](mailto:tech@signalwayantibody.com)

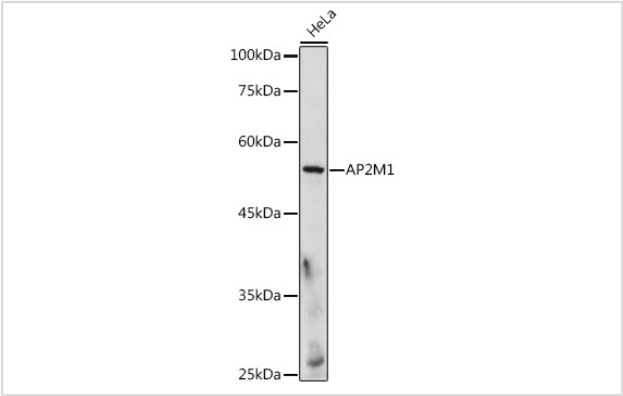
## Description

Product Name	AP2M1 Rabbit Polyclonal Antibody
Host Species	Rabbit
Clonality	Polyclonal
Isotype	IgG
Purification	Affinity purification
Applications	WB
Species Reactivity	Human,Mouse,Rat
Immunogen Description	Recombinant fusion protein of human AP2M1 (NP_001020376.1).
Other Names	AP2M1;AP50;CLAPM1;mu2
Accession No.	Uniprot:Q96CW1GeneID:1173
Uniprot	Q96CW1
GeneID	1173
Calculated MW	49kDa
SDS-PAGE MW	50KDa
Formulation	PBS with 0.02% sodium azide,50% glycerol,pH7.3.
Storage	Store at -20°C. Avoid freeze / thaw cycles.

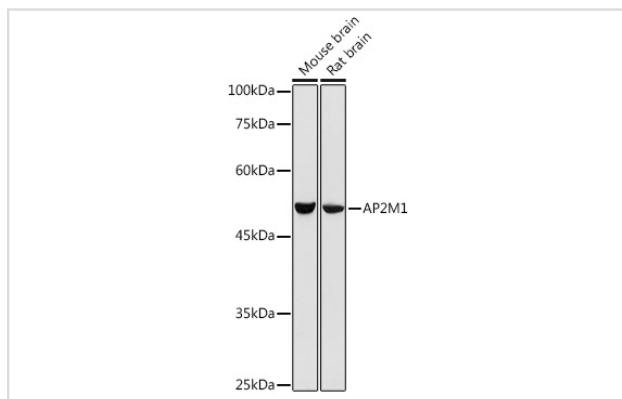
## Application Details

WB 1:500 - 1:2000

## Images



Western blot analysis of extracts of HeLa cells, using AP2M1 antibody.



Western blot analysis of extracts of various cell lines, using AP2M1 antibody.

## Background

This gene encodes a subunit of the heterotetrameric coat assembly protein complex 2 (AP2), which belongs to the adaptor complexes medium subunits family. The encoded protein is required for the activity of a vacuolar ATPase, which is responsible for proton pumping occurring in the acidification of endosomes and lysosomes. The encoded protein may also play an important role in regulating the intracellular trafficking and function of CTLA-4 protein. Three transcript variants encoding different isoforms have been found for this gene.

Note: This product is for in vitro research use only