

SLAMF7 Rabbit Polyclonal Antibody

Catalog No: #53805



Package Size: #53805-1 50ul #53805-2 100ul

Orders: order@signalwayantibody.com
Support: tech@signalwayantibody.com

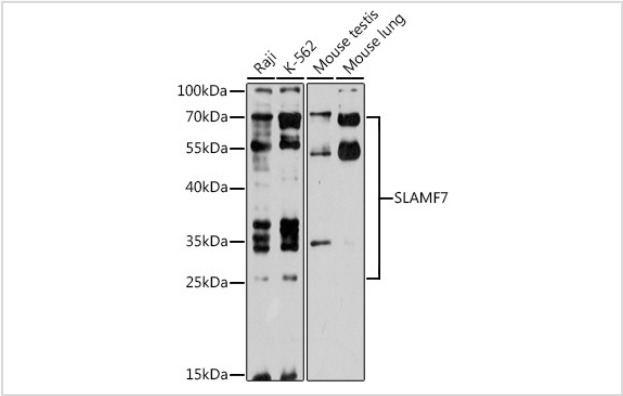
Description

Product Name	SLAMF7 Rabbit Polyclonal Antibody
Host Species	Rabbit
Clonality	Polyclonal
Isotype	IgG
Purification	Affinity purification
Applications	WB
Species Reactivity	Human,Mouse
Immunogen Description	Recombinant fusion protein of human SLAMF7 (NP_067004.3).
Other Names	SLAMF7;19A;CD319;CRACC;CS1
Accession No.	Uniprot:Q9NQ25GeneID:57823
Uniprot	Q9NQ25
GeneID	57823
Calculated MW	17kDa/21kDa/22kDa/25kDa/32kDa/37kDa
SDS-PAGE MW	25-70KDa
Formulation	PBS with 0.02% sodium azide,50% glycerol,pH7.3.
Storage	Store at -20°C. Avoid freeze / thaw cycles.

Application Details

WB 1:500 - 1:2000

Images



Western blot analysis of extracts of various cell lines, using SLAMF7 antibody.

Background

SLAM family member 7 (SLAMF7), also known as CRACC, CD319, CD2-like receptor-activating cytotoxic cells, and CS1, is a single-pass type I membrane protein and a member of the CD2 family of cell surface receptors. SLAMF7 is expressed on the surface of NK cells, CD8+ T cells, activated B cells, and mature dendritic cells but not in promyelocytic, B-cell lines, or T-cell lines. In human NK cells, activated SLAMF7 transmits signals

following association with the adaptor protein EAT-2 . In the absence of EAT-2, SLAMF7 potently inhibited natural killer cell function. It was also inhibitory in T cells, which are typically devoid of EAT-2. Thus, SLAMF7 can exert activating or inhibitory influences on cells of the immune system depending on cellular context and the availability of effector proteins.

Note: This product is for in vitro research use only