

GCG Rabbit Polyclonal Antibody

Catalog No: #53882

Package Size: #53882-1 50ul #53882-2 100ul

Orders: order@signalwayantibody.com

Support: tech@signalwayantibody.com

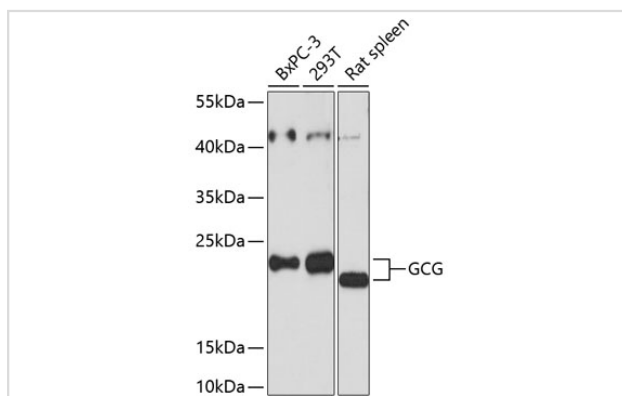
Description

Product Name	GCG Rabbit Polyclonal Antibody
Host Species	Rabbit
Clonality	Polyclonal
Isotype	IgG
Purification	Affinity purification
Applications	WB,IHC,IF
Species Reactivity	Human,Mouse,Rat
Immunogen Description	Recombinant fusion protein of human GCG (NP_002045.1).
Other Names	GCG;GLP-1;GLP1;GLP2;GRPP;glucagon
Accession No.	Swiss Prot:P01275Gene ID:2641
Uniprot	P01275
GeneID	2641
Calculated MW	20kDa
SDS-PAGE MW	21kDa
Formulation	Buffer: PBS with 0.02% sodium azide,50% glycerol,pH7.3.
Storage	Store at -20°C. Avoid freeze / thaw cycles.

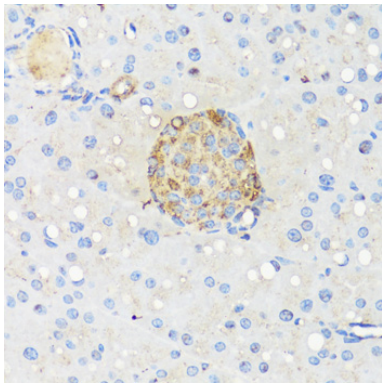
Application Details

WB □ 1:500 - 1:2000 IHC □ 1:50 - 1:200 IF □ 1:50 - 1:200

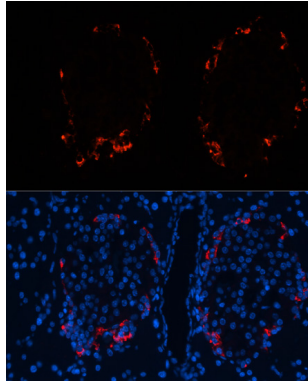
Images



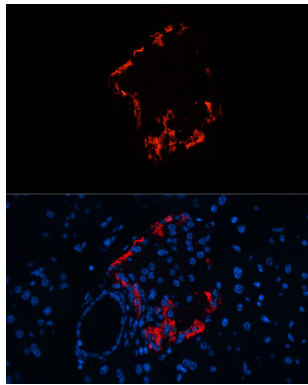
Western blot analysis of extracts of various cell lines, using GCG antibody.



Immunohistochemistry of paraffin-embedded mouse pancreatic islet using GCG antibody.



Immunofluorescence analysis of rat pancreas using GCG antibody.



Immunofluorescence analysis of mouse pancreas using GCG antibody.

Background

The protein encoded by this gene is actually a preproprotein that is cleaved into four distinct mature peptides. One of these, glucagon, is a pancreatic hormone that counteracts the glucose-lowering action of insulin by stimulating glycogenolysis and gluconeogenesis. Glucagon is a ligand for a specific G-protein linked receptor whose signalling pathway controls cell proliferation. Two of the other peptides are secreted from gut endocrine cells and promote nutrient absorption through distinct mechanisms. Finally, the fourth peptide is similar to glicentin, an active enteroglucagon.

Note: This product is for in vitro research use only