

# HTRA2 Rabbit Polyclonal Antibody

Catalog No: #53942



Package Size: #53942-1 50ul #53942-2 100ul

Orders: [order@signalwayantibody.com](mailto:order@signalwayantibody.com)  
Support: [tech@signalwayantibody.com](mailto:tech@signalwayantibody.com)

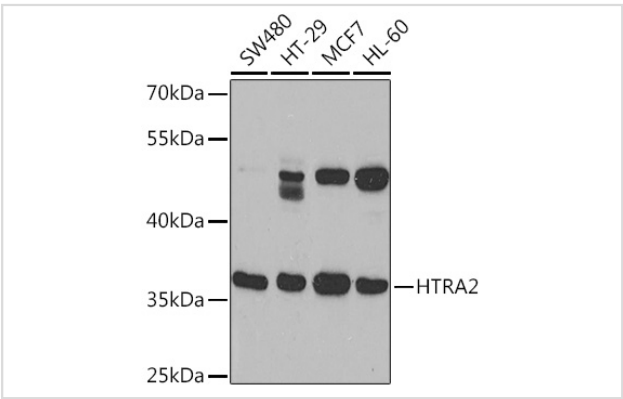
## Description

Product Name	HTRA2 Rabbit Polyclonal Antibody
Host Species	Rabbit
Clonality	Polyclonal
Isotype	IgG
Purification	Affinity purification
Applications	WB,IHC
Species Reactivity	Human,Mouse,Rat
Immunogen Description	Recombinant fusion protein of human HTRA2 (NP_037379.1).
Other Names	HTRA2;MGCA8;OMI;PARK13;PRSS25
Accession No.	Swiss Prot:O43464Gene ID:27429
Uniprot	O43464
GeneID	27429
Calculated MW	38kDa/39kDa/46kDa/48kDa
SDS-PAGE MW	36kDa
Formulation	Buffer: PBS with 0.02% sodium azide,50% glycerol,pH7.3.
Storage	Store at -20°C. Avoid freeze / thaw cycles.

## Application Details

WB□1:2000 - 1:5000IHC□1:50 - 1:200

## Images



Western blot analysis of extracts of various cell lines, using HTRA2 Rabbit pAb.

## Background

This gene encodes a serine protease. The protein has been localized in the endoplasmic reticulum and interacts with an alternatively spliced form of mitogen-activated protein kinase 14. The protein has also been localized to the mitochondria with release to the cytosol following apoptotic stimulus. The protein is thought to induce apoptosis by binding the apoptosis inhibitory protein baculoviral IAP repeat-containing 4. Nuclear localization of this

protein has also been observed. Alternate splicing of this gene results in multiple transcript variants encoding different isoforms.

---

Note: This product is for in vitro research use only