

GCN2 Rabbit pAb

Catalog No: #54007



Package Size: #54007-1 50ul #54007-2 100ul

Orders: [order@signalwayantibody.com](mailto:order@signalwayantibody.com)  
Support: [tech@signalwayantibody.com](mailto:tech@signalwayantibody.com)

Description

Product Name	GCN2 Rabbit pAb
Host Species	Rabbit
Clonality	Polyclonal
Isotype	IgG
Purification	Affinity purification
Applications	WB,IHC,IF
Species Reactivity	Human,Mouse,Rat
Immunogen Description	Recombinant fusion protein of human GCN2 (NP_001013725.2).
Other Names	EIF2AK4;GCN2;PVOD2
Accession No.	Swiss Prot:Q9P2K8Gene ID:440275
Uniprot	Q9P2K8
GeneID	199
Calculated MW	69kDa/183kDa/186kDa
SDS-PAGE MW	187kDa
Formulation	Buffer: PBS with 0.02% sodium azide,50% glycerol,pH7.3.
Storage	Store at -20°C. Avoid freeze / thaw cycles.

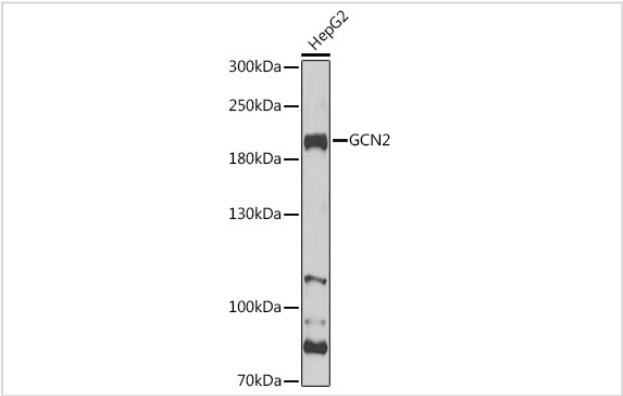
Application Details

WB□1:500 - 1:2000

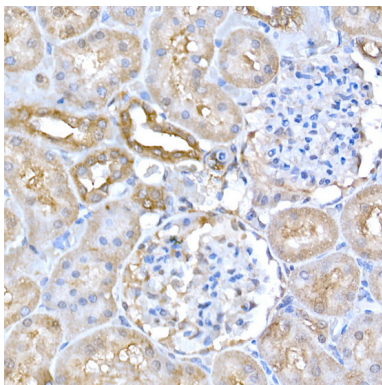
IHC□1:50 - 1:200

IF□1:50 - 1:200

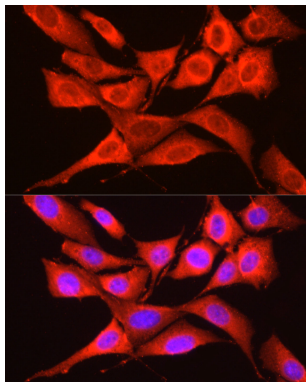
Images



Western blot analysis of extracts of HepG2 cells, using GCN2 Antibody at 1:1000 dilution.Secondary antibody: HRP Goat Anti-Rabbit IgG (H+L) at 1:10000 dilution.Lysates/proteins: 25ug per lane.Blocking buffer: 3% nonfat dry milk in TBST.Detection: ECL Basic Kit (RM00020).Exposure time: 30s.



Immunohistochemistry of paraffin-embedded rat kidney using GCN2 Rabbit pAb at dilution of 1:250 (40x lens). Perform high pressure antigen retrieval with 10 mM citrate buffer pH 6.0 before commencing with IHC staining protocol.



Immunofluorescence analysis of NIH/3T3 cells using GCN2 Rabbit pAb at dilution of 1:250 (40x lens). Blue: DAPI for nuclear staining.

## Background

This gene encodes a member of a family of kinases that phosphorylate the alpha subunit of eukaryotic translation initiation factor-2 (EIF2), resulting in the downregulation of protein synthesis. The encoded protein responds to amino acid deprivation by binding uncharged transfer RNAs. It may also be activated by glucose deprivation and viral infection. Mutations in this gene have been found in individuals suffering from autosomal recessive pulmonary venoocclusive-disease-2.

Note: This product is for in vitro research use only