

# PCM1 Rabbit Polyclonal Antibody

Catalog No: #54250



Package Size: #54250-1 50ul #54250-2 100ul

Orders: [order@signalwayantibody.com](mailto:order@signalwayantibody.com)  
Support: [tech@signalwayantibody.com](mailto:tech@signalwayantibody.com)

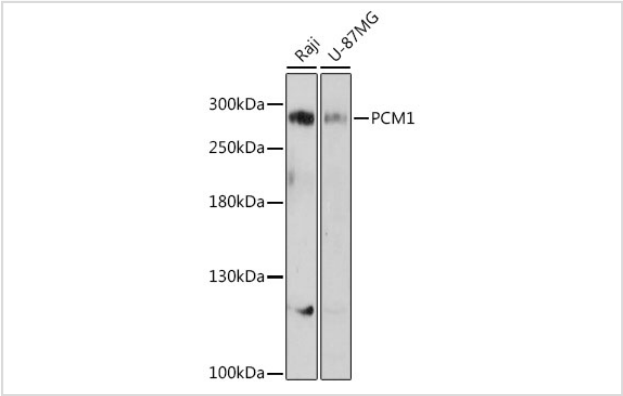
## Description

Product Name	PCM1 Rabbit Polyclonal Antibody
Host Species	Rabbit
Clonality	Polyclonal
Isotype	IgG
Purification	Affinity purification
Applications	WB,IF
Species Reactivity	Human
Immunogen Description	Recombinant fusion protein of human PCM1 (NP_006188.3).
Other Names	PCM1;PTC4;RET/PCM-1
Accession No.	Swiss Prot:Q15154Gene ID:5108
Uniprot	Q15154
GeneID	5108
Calculated MW	59kDa/222kDa/228kDa
SDS-PAGE MW	280kDa
Formulation	Buffer: PBS with 0.02% sodium azide,50% glycerol,pH7.3.
Storage	Store at -20°C. Avoid freeze / thaw cycles.

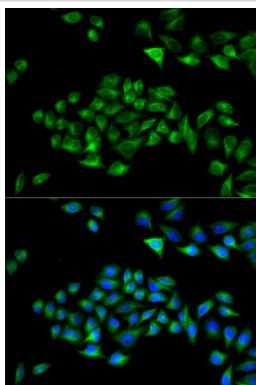
## Application Details

WB 1:500 - 1:2000IF 1:50 - 1:200

## Images



Western blot analysis of extracts of various cell lines, using PCM1 antibody.



Immunofluorescence analysis of HeLa cells using PCM1 antibody.

## Background

The protein encoded by this gene is a component of centriolar satellites, which are electron dense granules scattered around centrosomes. Inhibition studies show that this protein is essential for the correct localization of several centrosomal proteins, and for anchoring microtubules to the centrosome. Chromosomal aberrations involving this gene are associated with papillary thyroid carcinomas and a variety of hematological malignancies, including atypical chronic myeloid leukemia and T-cell lymphoma. Multiple transcript variants encoding different isoforms have been found for this gene.

Note: This product is for in vitro research use only