

SERPINF1 Rabbit Polyclonal Antibody

Catalog No: #54331



Package Size: #54331-1 50ul #54331-2 100ul

Orders: order@signalwayantibody.com
Support: tech@signalwayantibody.com

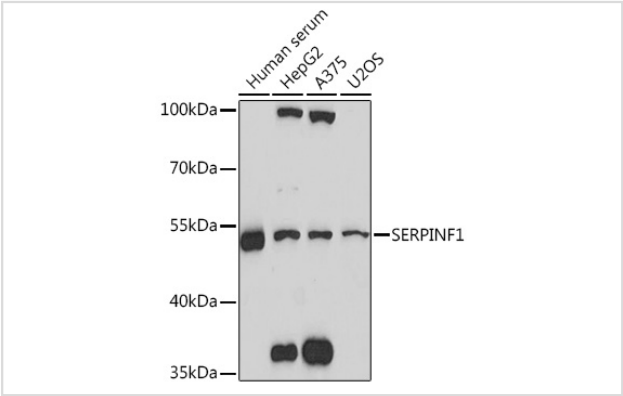
Description

Product Name	SERPINF1 Rabbit Polyclonal Antibody
Host Species	Rabbit
Clonality	Polyclonal
Isotype	IgG
Purification	Affinity purification
Applications	WB,IF
Species Reactivity	Human,Mouse,Rat
Immunogen Description	A synthetic peptide of human SERPINF1.
Other Names	SERPINF1;EPC-1;OI12;OI6;PEDF;PIG35
Accession No.	Swiss Prot:P36955Gene ID:5176
Uniprot	P36955
GeneID	5176
Calculated MW	46kDa
SDS-PAGE MW	46kDa
Formulation	Buffer: PBS with 0.02% sodium azide,50% glycerol,pH7.3.
Storage	Store at -20°C. Avoid freeze / thaw cycles.

Application Details

WB 1:500 - 1:2000IF 1:50 - 1:200

Images



Western blot analysis of extracts of various cell lines, using SERPINF1 Rabbit pAb.

Background

This gene encodes a member of the serpin family that does not display the serine protease inhibitory activity shown by many of the other serpin proteins. The encoded protein is secreted and strongly inhibits angiogenesis. In addition, this protein is a neurotrophic factor involved in neuronal differentiation in retinoblastoma cells. Mutations in this gene were found in individuals with osteogenesis imperfecta, type VI.

Note: This product is for in vitro research use only