

RING1A Rabbit Polyclonal Antibody

Catalog No: #54645



Package Size: #54645-1 50ul #54645-2 100ul

Orders: order@signalwayantibody.com
Support: tech@signalwayantibody.com

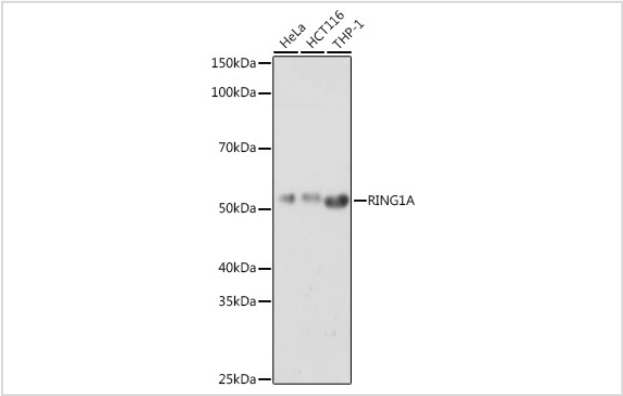
Description

Product Name	RING1A Rabbit Polyclonal Antibody
Host Species	Rabbit
Clonality	Polyclonal
Isotype	IgG
Purification	Affinity purification
Applications	WB,IHC
Species Reactivity	Human,Mouse,Rat
Immunogen Description	Recombinant protein of human RING1AA.
Other Names	RNF1; RING1A
Accession No.	Swiss Prot:Q06587Gene ID:6015
Uniprot	Q06587
GeneID	6015
Calculated MW	42kDa
SDS-PAGE MW	54KDa
Formulation	Buffer: PBS with 0.02% sodium azide,50% glycerol,pH7.3.
Storage	Store at -20°C. Avoid freeze / thaw cycles.

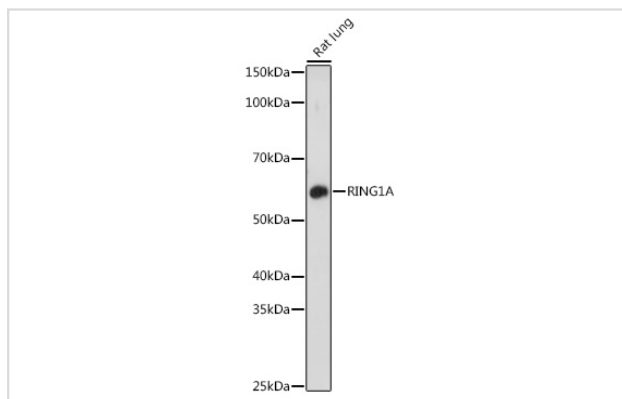
Application Details

WB 1:2000 - 1:5000IHC 1:50 - 1:200

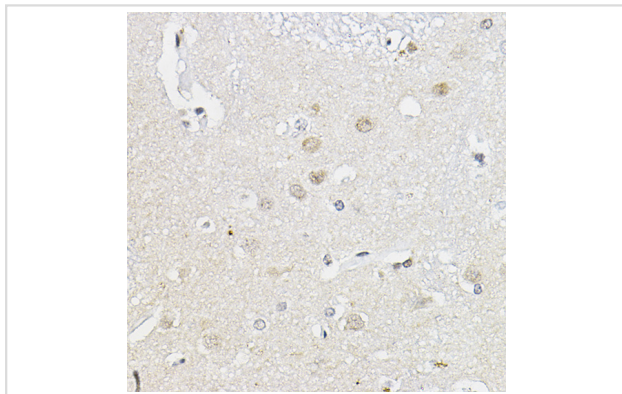
Images



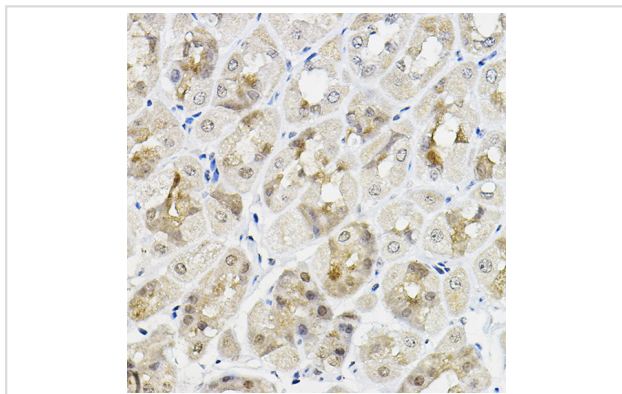
Western blot analysis of extracts of various cell lines, using RING1A antibody.



Western blot analysis of extracts of Rat lung, using RING1A antibody.



Immunohistochemistry of paraffin-embedded human brain using RING1A Rabbit pAb.



Immunohistochemistry of paraffin-embedded mouse stomach using RING1A Rabbit pAb.

Background

This gene belongs to the RING finger family, members of which encode proteins characterized by a RING domain, a zinc-binding motif related to the zinc finger domain. The gene product can bind DNA and can act as a transcriptional repressor. It is associated with the multimeric polycomb group protein complex. The gene product interacts with the polycomb group proteins BMI1, EDR1, and CBX4, and colocalizes with these proteins in large nuclear domains. It interacts with the CBX4 protein via its glycine-rich C-terminal domain. The gene maps to the HLA class II region, where it is contiguous with the RING finger genes FABGL and HKE4.

Note: This product is for in vitro research use only