

MAP2 Rabbit Polyclonal Antibody

Catalog No: #54692



Package Size: #54692-1 50ul #54692-2 100ul

Orders: order@signalwayantibody.com
Support: tech@signalwayantibody.com

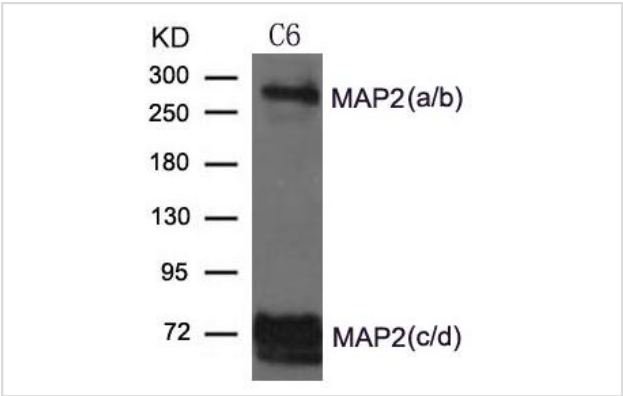
Description

Product Name	MAP2 Rabbit Polyclonal Antibody
Host Species	Rabbit
Clonality	Polyclonal
Isotype	IgG
Purification	The antibody was affinity-purified from rabbit antiserum by affinity-chromatography using epitope-specific immunogen.
Applications	WB,IHC,IF
Species Reactivity	Human,Mouse,Rat
Immunogen Type	Peptide
Immunogen Description	The antiserum was produced against synthesized peptide derived from human MAP-2.
Other Names	MAP2;MAP2A;MAP2B;MAP2C;Map2
Accession No.	Swiss Prot:P11137Gene ID:4133
Uniprot	P11137
GeneID	4133
Calculated MW	Predicted band size: 280 kDa
Formulation	Liquid in PBS containing 50% glycerol, 0.5% BSA and 0.02% sodium azide.
Storage	Shipped at 4°C. Upon delivery aliquot and store at -20°C for one year. Avoid freeze/thaw cycles.

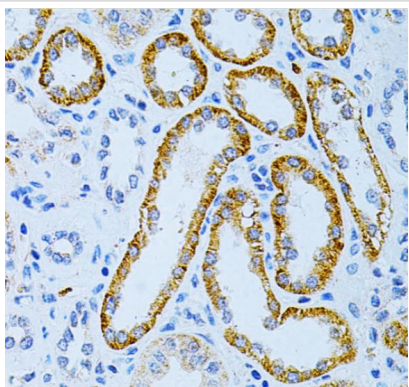
Application Details

WB 1:500 - 1:1000;
IHC 1:100 - 1:300;
IF 1:50 - 1:200

Images



Western blot analysis of extract from C6 cells using MAP2 Antibody



Immunohistochemistry analysis of paraffin-embedded human kidney cancer using MAP2 Antibody at dilution of 1:200 (40x lens)

Background

This gene encodes a protein that belongs to the microtubule-associated protein family. The proteins of this family are thought to be involved in microtubule assembly, which is an essential step in neurogenesis. The products of similar genes in rat and mouse are neuron-specific cytoskeletal proteins that are enriched in dendrites, implicating a role in determining and stabilizing dendritic shape during neuron development. A number of alternatively spliced variants encoding distinct isoforms have been described.

Note: This product is for in vitro research use only