

## IFITM1 Antibody

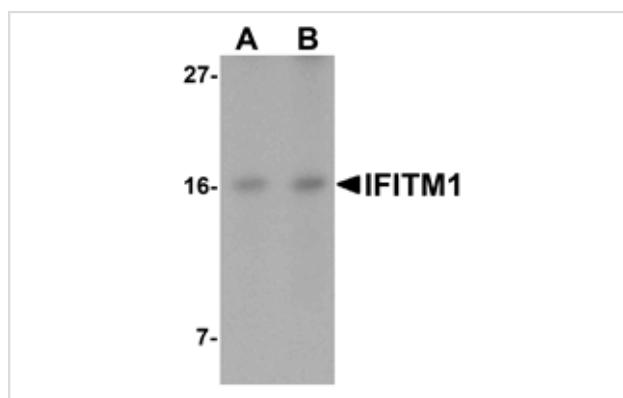
Catalog No: #25135

Orders: [order@signalwayantibody.com](mailto:order@signalwayantibody.com)Support: [tech@signalwayantibody.com](mailto:tech@signalwayantibody.com)

## Description

Product Name	IFITM1 Antibody
Host Species	Rabbit
Clonality	Polyclonal
Purification	Affinity chromatography purified via peptide column
Applications	ELISA WB
Species Reactivity	Hu
Immunogen Type	Peptide
Immunogen Description	Raised against a 14 amino acid peptide near the carboxy terminus of human IFITM1.
Target Name	IFITM1
Other Names	Interferon induced transmembrane protein 1, Interferon-induced protein 17, CD225, 9-27, LEU13, IFI17
Accession No.	Swiss-Prot:P13164Gene ID:8519
Uniprot	P13164
GeneID	8519;
Concentration	1mg/ml
Formulation	Supplied in PBS containing 0.02% sodium azide.
Storage	Can be stored at -20°C, stable for one year. As with all antibodies care should be taken to avoid repeated freeze thaw cycles. Antibodies should not be exposed to prolonged high temperatures.

## Images



Western blot analysis of IFITM1 in Jurkat cell lysate with IFITM1 antibody at (A) 2.5 and (B) 5 ug/mL.

## Background

IFITM1 (Interferon inducible transmembrane protein 1) is a member of the IFN-inducible transmembrane protein family. It is an essential mediator of interferon-gamma-induced antiproliferation and plays a role in the control of cell growth. IFITM1 is upregulated in several tumor types and may be useful as a tumor biomarker. Both mouse IFITM1 and IFITM3 are expressed on the cell surfaces of primordial germ cells in a developmentally-regulated manner. IFITM1 activity is required for primordial germ cell transit, and IFITM1 acts as a repulsive molecule by repelling non-IFITM1-expressing primordial germ cells from the mesoderm into the endoderm.

---

Note: This product is for in vitro research use only