

## SCUBE1 Antibody

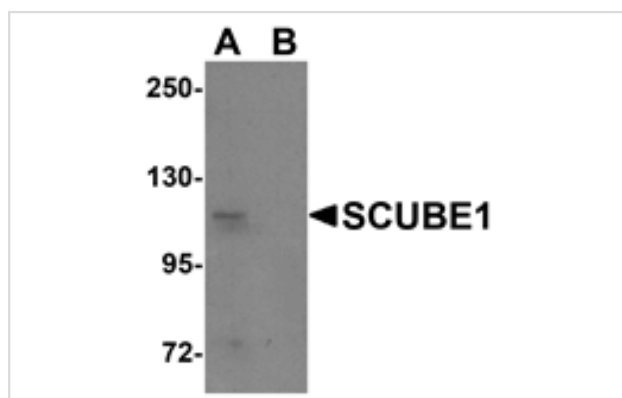
Catalog No: #25152

Orders: [order@signalwayantibody.com](mailto:order@signalwayantibody.com)Support: [tech@signalwayantibody.com](mailto:tech@signalwayantibody.com)

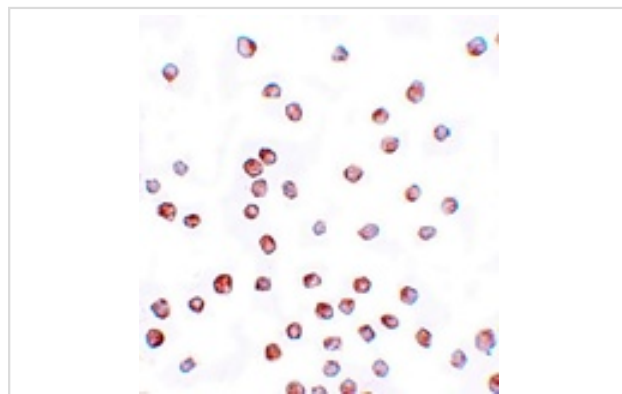
## Description

Product Name	SCUBE1 Antibody
Host Species	Rabbit
Clonality	Polyclonal
Purification	Affinity chromatography purified via peptide column
Applications	ELISA WB ICC
Species Reactivity	Hu
Immunogen Type	Peptide
Immunogen Description	Raised against a 14 amino acid peptide near the center of human SCUBE1.
Target Name	SCUBE1
Other Names	Signal peptide CUB domain EGF-like 1
Accession No.	Swiss-Prot:Q8IWY4Gene ID:80274
Uniprot	Q8IWY4
GeneID	80274;
Concentration	1mg/ml
Formulation	Supplied in PBS containing 0.02% sodium azide.
Storage	Can be stored at -20°C, stable for one year. As with all antibodies care should be taken to avoid repeated freeze thaw cycles. Antibodies should not be exposed to prolonged high temperatures.

## Images



Western blot analysis of SCUBE1 in Daudi cell lysate with SCUBE1 antibody at 1 ug/mL in (A) the absence and (B) the presence of blocking peptide.



Immunocytochemistry of SCUBE1 in Daudi cells with SCUBE1 antibody at 20 ug/mL.

## Background

---

SCUBE1 is an EGF-related protein with a CUB (C1s-like) domain that is expressed primarily in the developing gonad, nervous system, somites, surface ectoderm and limb buds. The N-terminal EGF-like repeats of SCUBE1 participate in the formation of adhesions in a Ca<sup>2+</sup>-dependent fashion. In contrast, the C-terminal cysteine-rich motifs and CUB domain can directly bind and antagonize bone morphogenic protein activity; genetic ablation of this region resulted in brain malformation in mice embryos, suggesting SCUBE1 plays a role in brain morphogenesis. SCUBE1 has also been implicated in early craniofacial development in mice.

---

Note: This product is for in vitro research use only