

SCUBE2 Antibody

Catalog No: #25153

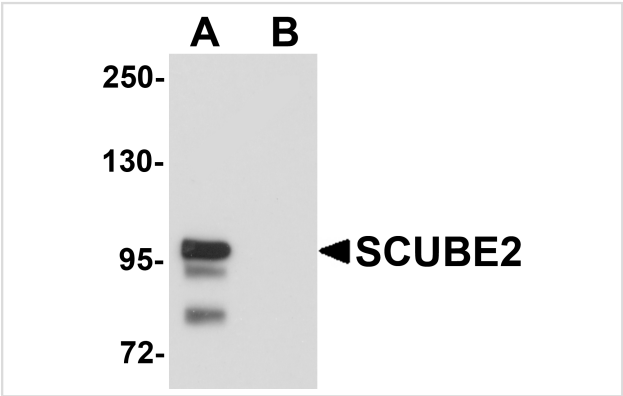


Orders: order@signalwayantibody.com
Support: tech@signalwayantibody.com

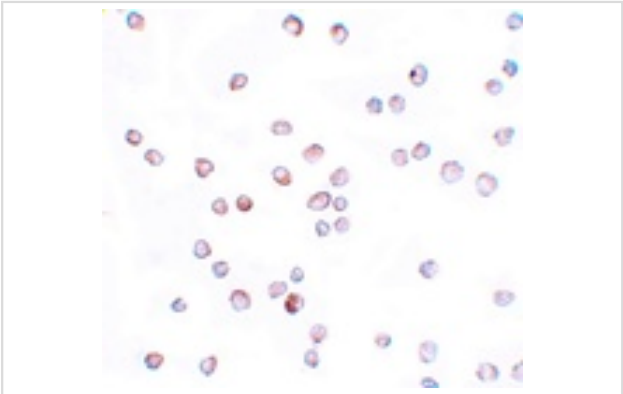
Description

Product Name	SCUBE2 Antibody
Host Species	Rabbit
Clonality	Polyclonal
Purification	Affinity chromatography purified via peptide column
Applications	ELISA WB ICC
Species Reactivity	Hu Rt
Immunogen Type	Peptide
Immunogen Description	Raised against a 17 amino acid peptide near the center of human SCUBE2.
Target Name	SCUBE2
Other Names	Signal peptide CUB domain EGF-like 2
Accession No.	Swiss-Prot:Q9NQ36Gene ID:57758
Uniprot	Q9NQ36
GeneID	57758;
Concentration	1mg/ml
Formulation	Supplied in PBS containing 0.02% sodium azide.
Storage	Can be stored at -20°C, stable for one year. As with all antibodies care should be taken to avoid repeated freeze thaw cycles. Antibodies should not be exposed to prolonged high temperatures.

Images



Western blot analysis of SCUBE2 in Daudi cell lysate with SCUBE2 antibody at 1 ug/mL in (A) the absence and (B) the presence of blocking peptide.



Immunocytochemistry of SCUBE2 in Daudi cells with SCUBE2 antibody at 20 ug/mL.

Background

SCUBE2 is a member of a family of secreted glycoproteins that contain N-terminal EGF-like repeats and C-terminal cysteine-rich motifs and CUB domain and are expressed in embryonic neuroectoderm and vascular epithelium. SCUBE2 is a close homolog to SCUBE1 and can form a heterodimeric complex with SCUBE1. SCUBE2 is thought to participate in the Hedgehog signaling pathway by specifically interacting with Sonic Hedgehog (SHH) and the receptor PTCH1, enhancing the SHH signaling activity in the raft microdomains of the plasma membrane, and may thus play important roles in organ development and tumor progression.

Note: This product is for in vitro research use only