

SCRN2 Antibody

Catalog No: #25155

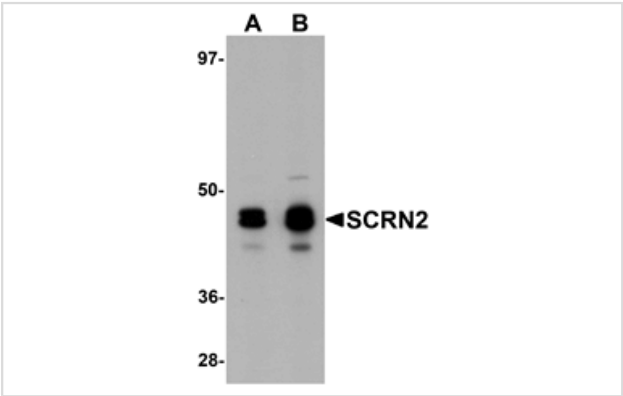


Orders: order@signalwayantibody.com
Support: tech@signalwayantibody.com

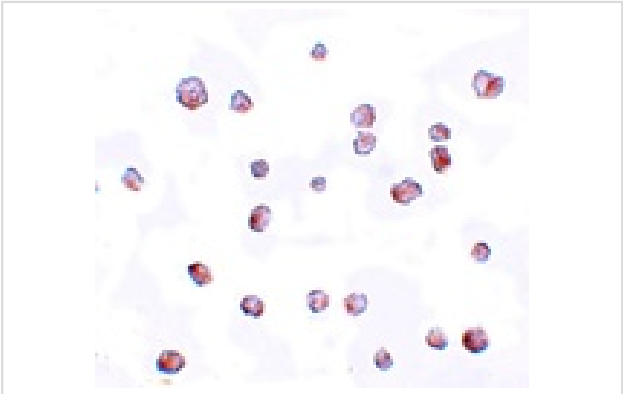
Description

Product Name	SCRN2 Antibody
Host Species	Rabbit
Clonality	Polyclonal
Purification	Affinity chromatography purified via peptide column
Applications	ELISA WB ICC
Species Reactivity	Hu Ms Rt
Immunogen Type	Peptide
Immunogen Description	Raised against an 18 amino acid peptide near the carboxy terminus of human SCRIN2.
Target Name	SCRN2
Other Names	Secernin 2, SES2
Accession No.	Swiss-Prot:Q96FV2Gene ID:90507
Uniprot	Q96FV2
GeneID	90507;
Concentration	1mg/ml
Formulation	Supplied in PBS containing 0.02% sodium azide.
Storage	Can be stored at -20°C, stable for one year. As with all antibodies care should be taken to avoid repeated freeze thaw cycles. Antibodies should not be exposed to prolonged high temperatures.

Images



Western blot analysis of SCRIN2 in 293 cell tissue lysate with SCRIN2 antibody at (A) 0.5 and (B) 1 ug/mL.



Immunocytochemistry of SCRIN2 in 293 cells with SCRIN2 antibody at 20 ug/mL.

Background

SCRN2 is a member of the secernin family of proteins which includes the homologous SCR1, a protein that was first identified as being involved in the regulation of exocytosis from peritoneal mast cells. Little is known of SCR2, but studies have shown that SCR1 may possess epitopes that function as tumor-associated antigens in gastric cancers and increased SCR1 expression in patients with colorectal cancer correlated with poor prognosis, suggesting that SCR2 may also be involved in protein secretion or the regulation of cell growth.

Note: This product is for in vitro research use only