

## CaBP8 Antibody

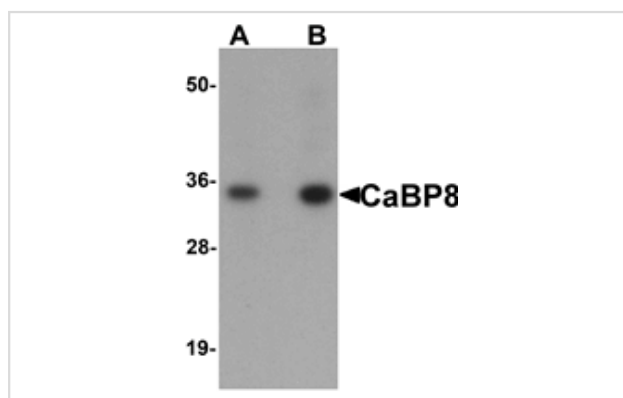
Catalog No: #25160

Orders: [order@signalwayantibody.com](mailto:order@signalwayantibody.com)Support: [tech@signalwayantibody.com](mailto:tech@signalwayantibody.com)

## Description

Product Name	CaBP8 Antibody
Host Species	Rabbit
Clonality	Polyclonal
Purification	Affinity chromatography purified via peptide column
Applications	ELISA WB
Species Reactivity	Hu Ms Rt
Immunogen Type	Peptide
Immunogen Description	Raised against a 16 amino acid peptide near the amino terminus of human CaBP8.
Target Name	CaBP8
Other Names	Calcium-binding protein 8, Calneuron-1, CALN1, Calneuron I
Accession No.	Swiss-Prot:Q9BXU9Gene ID:83698
Uniprot	Q9BXU9
GeneID	83698;
Concentration	1mg/ml
Formulation	Supplied in PBS containing 0.02% sodium azide.
Storage	Can be stored at -20°C, stable for one year. As with all antibodies care should be taken to avoid repeated freeze thaw cycles. Antibodies should not be exposed to prolonged high temperatures.

## Images



Western blot analysis of CaBP8 in 3T3 cell lysate with CaBP8 antibody at (A) 1 and (B) 2 ug/mL.

## Background

Calcium binding proteins (CaBP) play a crucial role in the calcium-mediated cellular signal transduction pathway in the central nervous system. The CaBP family shares much similarity with CaM I (calmodulin), and it has been shown that CaBP proteins can substitute functionally for, and possibly augment the function of, CaM I. CaBP8, contains two EF-hand domains for calcium binding and shares 70% homology with CaBP7 and 50% homology with CaM I. It negatively regulates Golgi-to-plasma membrane trafficking by interacting with PI4KB and inhibiting its activity. Both CaBP8 and CaBP7 possess a targeting mechanism that is unique amongst the CaBPs that may contribute to differential functional Ca<sup>2+</sup>-sensing by these family members.

---

Note: This product is for in vitro research use only