

## AFP Antibody

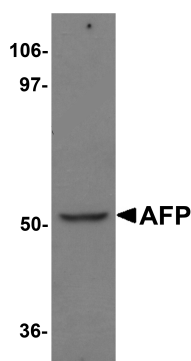
Catalog No: #25163

Orders: [order@signalwayantibody.com](mailto:order@signalwayantibody.com)Support: [tech@signalwayantibody.com](mailto:tech@signalwayantibody.com)

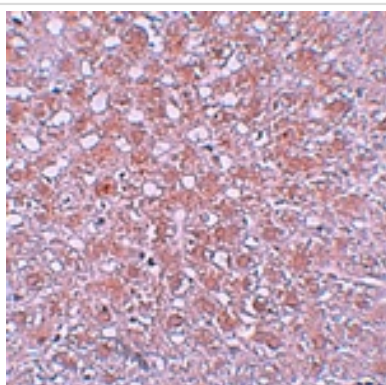
## Description

Product Name	AFP Antibody
Host Species	Rabbit
Clonality	Polyclonal
Purification	Affinity chromatography purified via peptide column
Applications	ELISA WB IHC
Species Reactivity	Hu Ms Rt
Immunogen Type	Peptide
Immunogen Description	Raised against a 14 amino acid peptide near the amino terminus of human AFP.
Target Name	AFP
Other Names	Alpha-fetoprotein, FETA, HPAFP
Accession No.	Swiss-Prot:P02771 Gene ID:174
Uniprot	P02771
GeneID	174;
Concentration	1mg/ml
Formulation	Supplied in PBS containing 0.02% sodium azide.
Storage	Can be stored at -20°C, stable for one year. As with all antibodies care should be taken to avoid repeated freeze thaw cycles. Antibodies should not be exposed to prolonged high temperatures.

## Images



Western blot analysis of AFP in human liver tissue lysate with AFP antibody at 1 ug/mL.



Immunohistochemistry of AFP in rat liver tissue with AFP antibody at 10 ug/mL.

## Background

Alpha-fetoprotein (AFP) is a major plasma protein produced by the yolk sac and the liver during fetal development. In adults, AFP expression is often associated with hepatoma or teratoma. However, hereditary persistence of AFP may also be found in individuals with no obvious pathology. AFP is thought to be the fetal counterpart of serum albumin, and the AFP and albumin genes are present in tandem in the same transcriptional orientation on chromosome 4. AFP is found in monomeric as well as dimeric and trimeric forms, and binds copper, nickel, fatty acids and bilirubin. AFP levels in amniotic fluid is used to measure renal loss of protein to screen for spina bifida and anencephaly.

Note: This product is for in vitro research use only