

eIF2 alpha (Phospho-Ser51) Rabbit mAb

Catalog No: #14123



Package Size: #14123-1 50ul #14123-2 100ul

Orders: order@signalwayantibody.com
Support: tech@signalwayantibody.com

Description

| | |
|-----------------------|--|
| Product Name | eIF2 alpha (Phospho-Ser51) Rabbit mAb |
| Host Species | Rabbit |
| Clonality | Monoclonal |
| Isotype | Rabbit IgG |
| Purification | Affinity-chromatography |
| Applications | WB IHC ICC/IF FC |
| Species Reactivity | Human Mouse Rat |
| Specificity | Phospho-eIF2 alpha (Ser51) Antibody detects endogenous levels of total Phospho-eIF2 alpha (Ser51) |
| Immunogen Description | A synthesized peptide derived from human Phospho-eIF2 alpha (Ser51) |
| Other Names | EIF-2; eIF-2-alpha; eIF-2A; eIF-2alpha; EIF2; EIF2A; EIF2S1; IF2A; |
| Accession No. | Uniprot:P05198 |
| Uniprot | P05198 |
| Calculated MW | 36kDa |
| Formulation | Rabbit IgG in phosphate buffered saline , pH 7.4, 150mM NaCl, 0.02% sodium azide and 50% glycerol. |
| Storage | Store at +4Λ C short term. Store at -20Λ C long term. Avoid freeze / thaw cycle. |

Application Details

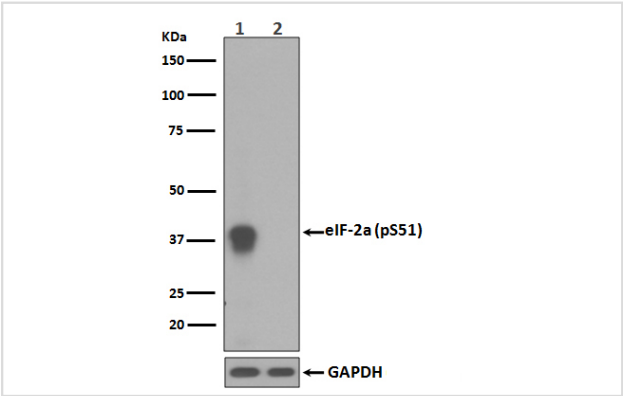
WB:1:500~1:2000

IHC:1:50~1:200

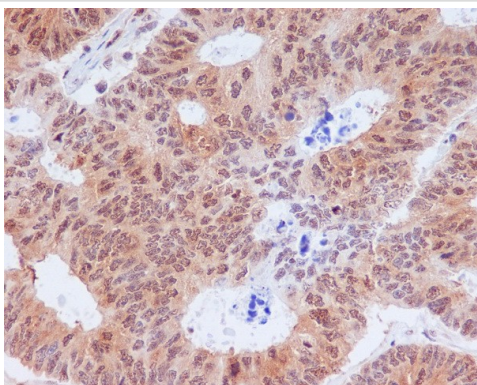
ICC/IF:1:50~1:200

FC:1:40

Images



Western blot analysis of Phospho-eIF2 alpha (Ser51) expression in (1)HeLa cell lysates treated with Calyculin A;(2) Untreated HeLa cell lysates.



Immunohistochemical analysis of paraffin-embedded human colon cancer, using Phospho-eIF2 alpha (Ser51) Antibody.

Product Description

eIF2A a translation initiation factor that functions in the early steps of protein synthesis by forming a ternary complex with GTP and initiator tRNA. This complex binds to a 40s ribosomal subunit, followed by mRNA binding to form a 43S preinitiation complex.

Note: This product is for in vitro research use only