

## LAT (Phospho-Tyr220) Rabbit mAb

Catalog No: #14128

Package Size: #14128-1 50ul #14128-2 100ul

Orders: order@signalwayantibody.com

Support: tech@signalwayantibody.com

## Description

Product Name	LAT (Phospho-Tyr220) Rabbit mAb
Host Species	Rabbit
Clonality	Monoclonal
Isotype	Rabbit IgG
Purification	Affinity-chromatography
Applications	WB;IHC;IF
Species Reactivity	Human;Mouse;Rat
Specificity	Phospho-LAT LAT (Y220) Antibody detects endogenous levels of total Phospho-LAT (Y220)
Immunogen Description	A synthesized peptide derived from human Phospho-LAT (Y220)
Other Names	36 kDa phospho-tyrosine adaptor protein; LAT1; lat; pp36
Accession No.	Uniprot:O43561
Uniprot	O43561
Calculated MW	28 kDa
SDS-PAGE MW	36 kDa
Formulation	Rabbit IgG in phosphate buffered saline , pH 7.4, 150mM NaCl, 0.02% sodium azide and 50% glycerol.
Storage	Store at +4 $\Lambda$ C short term. Store at -20 $\Lambda$ C long term. Avoid freeze / thaw cycle.

## Application Details

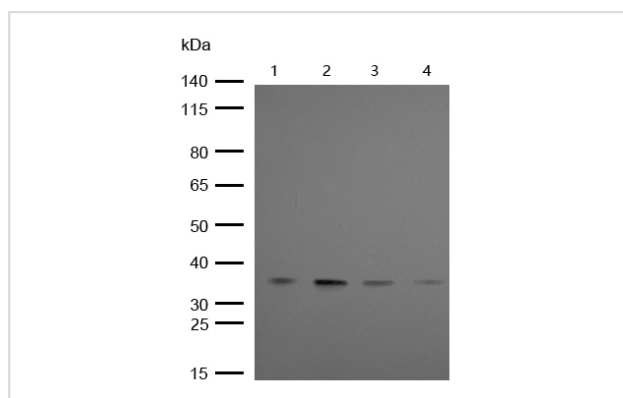
WB:1:500~1:2000

IHC:1:50~1:200

ICC/IF:1:50~1:200

IP:1:30

## Images



All lanes : Phospho-LAT (Y220) Rabbit mAb at 1/1k dilution

Lane 1 : JK whole cell lysates

Lane 2 : MCF7 whole cell lysates

Lane 3 : Hela whole cell lysates

Lane 4 : HepG2 whole cell lysates

Lysates/proteins at 20  $\mu$ g per lane.

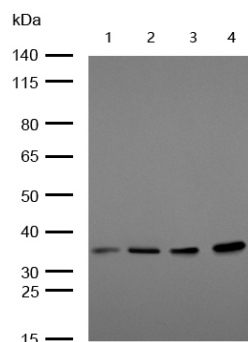
Secondary

All lanes : Goat Anti-Rabbit IgG H&amp;L (HRP) at 1/20000 dilution

Predicted band size: 28 kDa

Observed band size: 36 kDa

Exposure time: 10 seconds



All lanes : Phospho-LAT (Y220) Rabbit mAb at 1/1k dilution

Lane 1 : Mouse Liver lysates  
Lane 2 : Mouse Kidney lysates  
Lane 3 : Rat Liver lysates  
Lane 4 : Rat Kidney lysates

Lysates/proteins at 20 µg per lane.

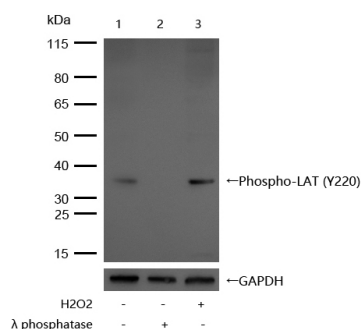
Secondary

All lanes : Goat Anti-Rabbit IgG H&L (HRP) at 1/20000 dilution

Predicted band size: 28 kDa

Observed band size: 36 kDa

Exposure time: 10 seconds



All lanes : Phospho-LAT (Y220) Rabbit mAb at 1/1k dilution

Lane 1 : MCF7 whole cell lysates  
Lane 2 : MCF7 treated with Lambda Protein Phosphatase for 30min whole cell lysates  
Lane 3 : MCF7 treated with 2mM H2O2 for 15min whole cell lysates

Lysates/proteins at 20 µg per lane.

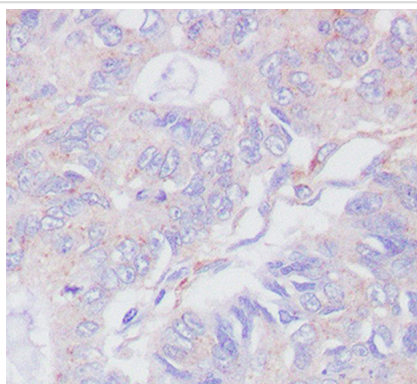
Secondary

All lanes : Goat Anti-Rabbit IgG H&L (HRP) at 1/20000 dilution

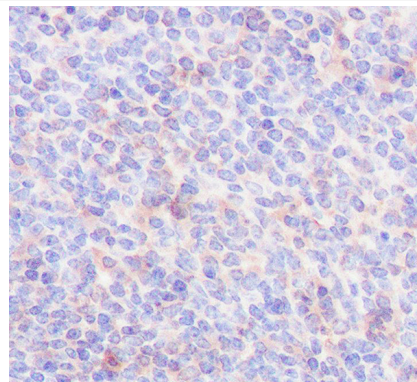
Predicted band size: 28 kDa

Observed band size: 36 kDa

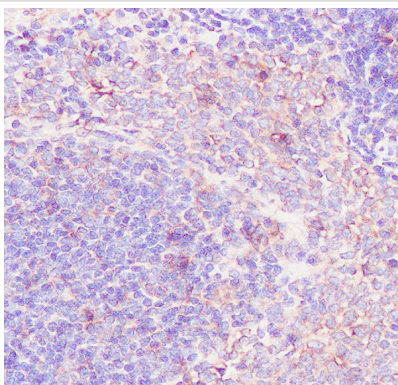
Exposure time: 12 seconds



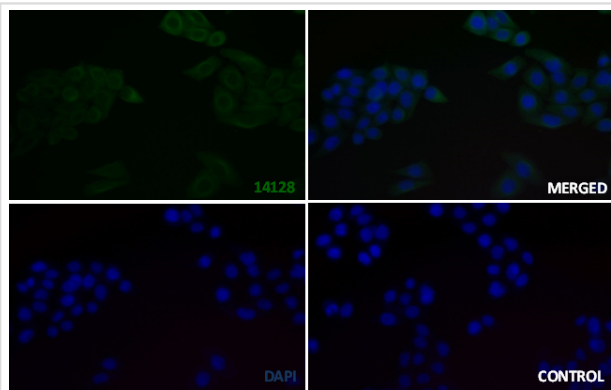
Formalin-fixed, paraffin-embedded human colon carcinoma tissue stained for Phospho-LAT (Y220) using 14128 at 1/100 dilution in immunohistochemical analysis.



Formalin-fixed, paraffin-embedded mouse spleen tissue stained for Phospho-LAT (Y220) using 14128 at 1/100 dilution in immunohistochemical analysis.



Formalin-fixed, paraffin-embedded rat spleen tissue stained for Phospho-LAT (Y220) using 14128 at 1/100 dilution in immunohistochemical analysis.



Immunocytochemistry/ Immunofluorescence - p-LAT (Y220) antibody (14128)

14128 staining p-LAT (Y220) in the HeLa cell line by ICC/IF. Cells were fixed with 4% Paraformaldehyde permeabilized with 0.1% Triton X-100.

Samples were incubated with 14128 at a working dilution of 1/100. The secondary antibody was Alexa FluorB 488 goat anti rabbit, used at a dilution of 1/500.

The negative control is shown in bottom right hand panel - for the negative control, purified 14128 was used at a dilution of 1/100 followed by Alexa FluorB 647 goat anti- rabbit antibody at a dilution of 1/500.

Nuclei were counterstained with DAPI

## Product Description

Required for TCR (T-cell antigen receptor)- and pre-TCR-mediated signaling, both in mature T-cells and during their development. Involved in FCGR3 (low affinity immunoglobulin gamma Fc region receptor III)-mediated signaling in natural killer cells and FCER1 (high affinity immunoglobulin epsilon receptor)-mediated signaling in mast cells. Couples activation of these receptors and their associated kinases with distal intracellular events such as mobilization of intracellular calcium stores, PKC activation, MAPK activation or cytoskeletal reorganization through the recruitment of PLCG1, GRB2, GRAP2, and other signaling molecules.

Note: This product is for in vitro research use only