

Smad5 (Phospho-Ser463/Ser465) Rabbit mAb

Catalog No: #14137



Package Size: #14137-1 50ul #14137-2 100ul

Orders: order@signalwayantibody.com
Support: tech@signalwayantibody.com

Description

Product Name	Smad5 (Phospho-Ser463/Ser465) Rabbit mAb
Host Species	Rabbit
Clonality	Monoclonal
Isotype	Rabbit IgG
Purification	Affinity-chromatography
Applications	WB IHC ICC/IF
Species Reactivity	Human Mouse Rat
Specificity	Phospho-Smad5 (S463/465) Antibody detects endogenous levels of total Phospho-Smad5 (S463/465)
Immunogen Description	A synthesized peptide derived from human Phospho-Smad5 (S463/465)
Other Names	hSmad5; JV5-1 ; MADH5; SMAD5; MusMLP ;SMAD family member 5;
Accession No.	Uniprot:Q99717
Uniprot	Q99717
Calculated MW	58 kDa
Formulation	Rabbit IgG in phosphate buffered saline , pH 7.4, 150mM NaCl, 0.02% sodium azide and 50% glycerol.
Storage	Store at +4Λ C short term. Store at -20Λ C long term. Avoid freeze / thaw cycle.

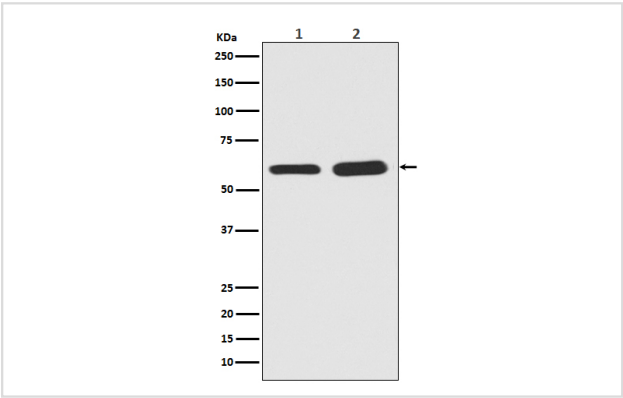
Application Details

WB:1:500~1:2000

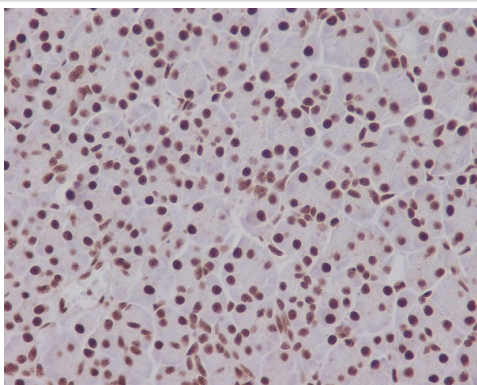
IHC:1:50~1:200

ICC/IF:1:50~1:200

Images



Western blot analysis of Phospho-Smad5 in (1) Mouse brain tissue lysate; (2) Rat brain tissue lysate.



Immunohistochemical analysis of paraffin-embedded human pancreas, using Phospho-Smad5 (S463/465) Antibody.

Product Description

Transcriptional modulator activated by BMP (bone morphogenetic proteins) type 1 receptor kinase. SMAD5 is a receptor-regulated SMAD (R-SMAD). SMAD5 is required for normal development of the cardiovascular system in vivo; lack of the SMAD5 gene results in apoptosis of cardiac myocytes.

Note: This product is for in vitro research use only