

CDK1/2/3 (Phospho-Thr14) Rabbit mAb

Catalog No: #14153

Package Size: #14153-1 50ul #14153-2 100ul

Orders: order@signalwayantibody.com

Support: tech@signalwayantibody.com

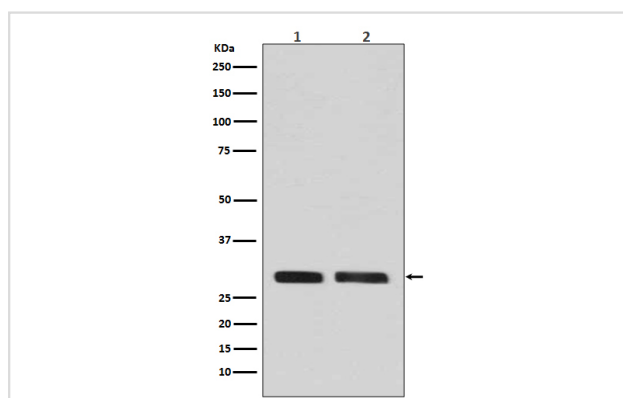
Description

| | |
|-----------------------|--|
| Product Name | CDK1/2/3 (Phospho-Thr14) Rabbit mAb |
| Host Species | Rabbit |
| Clonality | Monoclonal |
| Isotype | Rabbit IgG |
| Purification | Affinity-chromatography |
| Applications | WB IHC ICC/IF IP |
| Species Reactivity | Human Mouse Rat |
| Specificity | Phospho-CDK1/2/3 (T14) Antibody detects endogenous levels of total Phospho-CDK1/2/3 (T14) |
| Immunogen Description | A synthesized peptide derived from human Phospho-CDK1/2/3 (T14) |
| Other Names | CDK1; CDK2; CDK3; |
| Accession No. | Uniprot:P06493/P24941/Q00526 |
| Uniprot | P06493/P24941/Q00526 |
| Calculated MW | 34kDa |
| Formulation | Rabbit IgG in phosphate buffered saline , pH 7.4, 150mM NaCl, 0.02% sodium azide and 50% glycerol. |
| Storage | Store at +4 Λ C short term. Store at -20 Λ C long term. Avoid freeze / thaw cycle. |

Application Details

WB:1:500~1:2000IHC:1:50~1:200ICC/IF:1:50~1:200IP:1:50

Images



Western blot analysis of Phospho-CDK1/2/3 (T14) expression in (1) A431 cell lysate; (2) HeLa cell lysate.

Product Description

Plays a key role in the control of the eukaryotic cell cycle, where it is required for entry into S-phase and mitosis.

Note: This product is for in vitro research use only