

alpha Synuclein (Phospho-Ser129) Rabbit mAb

Catalog No: #14154

Package Size: #14154-1 50ul #14154-2 100ul

Orders: order@signalwayantibody.com

Support: tech@signalwayantibody.com

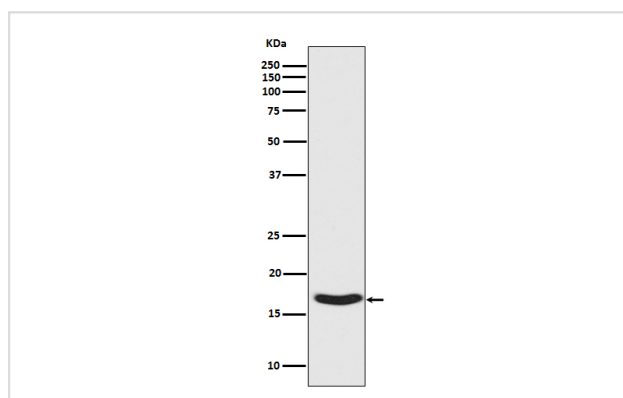
Description

Product Name	alpha Synuclein (Phospho-Ser129) Rabbit mAb
Host Species	Rabbit
Clonality	Monoclonal
Isotype	Rabbit IgG
Purification	Affinity-chromatography
Applications	WB ICC/IF
Species Reactivity	Human Mouse Rat
Specificity	Phospho-alpha Synuclein (S129) Antibody detects endogenous levels of total Phospho-alpha Synuclein (S129)
Immunogen Description	A synthesized peptide derived from human Phospho-alpha Synuclein (S129)
Other Names	NACP; Non-A beta component of AD amyloid; Non-A4 component of amyloid precursor; SYN; SYUA; alpha-synuclein; PARK1; PARK4; PD1; SNCA;
Accession No.	Uniprot:P37840
Uniprot	P37840
Calculated MW	18kDa
Formulation	Rabbit IgG in phosphate buffered saline , pH 7.4, 150mM NaCl, 0.02% sodium azide and 50% glycerol.
Storage	Store at +4ℳ C short term. Store at -20ℳ C long term. Avoid freeze / thaw cycle.

Application Details

WB:1:500~1:2000ICC/IF:1:50~1:200

Images



Western blot analysis of Synuclein phosphorylation expression in Human fetal brain lysate.

Product Description

Alpha-synuclein is a member of the synuclein family, which also includes beta- and gamma-synuclein. Synucleins are abundantly expressed in the brain and alpha- and beta-synuclein inhibit phospholipase D2 selectively.

Note: This product is for in vitro research use only