

Cdk1/2 (Phospho-Thr14) Rabbit mAb

Catalog No: #14162

Package Size: #14162-1 50ul #14162-2 100ul

Orders: order@signalwayantibody.comSupport: tech@signalwayantibody.com

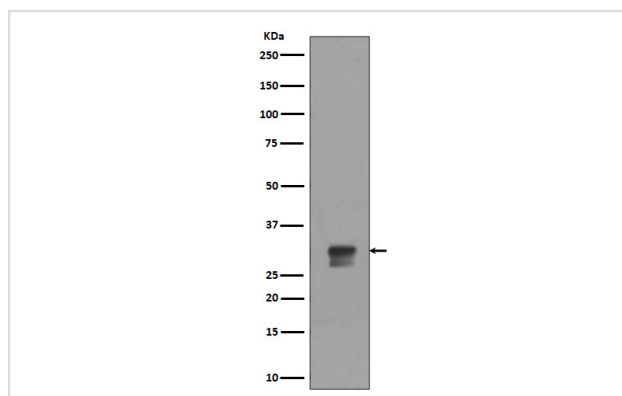
Description

Product Name	Cdk1/2 (Phospho-Thr14) Rabbit mAb
Host Species	Rabbit
Clonality	Monoclonal
Isotype	Rabbit IgG
Purification	Affinity-chromatography
Applications	WB IHC IP
Species Reactivity	Human Mouse Rat
Specificity	Phospho-Cdk1/2 (T14) Antibody detects endogenous levels of total Phospho-Cdk1/2 (T14)
Immunogen Description	A synthesized peptide derived from human Phospho-Cdk1/2 (T14)
Other Names	CDC28; CDC2A; CDK1; Cell division control protein 2 homolog; Cyclin-dependent kinase 1; MPF; kinase Cdc2; p34 protein kinase;
Accession No.	Uniprot:P06493/P24941
Uniprot	P06493/P24941
Calculated MW	34kDa
Formulation	Rabbit IgG in phosphate buffered saline , pH 7.4, 150mM NaCl, 0.02% sodium azide and 50% glycerol.
Storage	Store at +4ℳ C short term. Store at -20ℳ C long term. Avoid freeze / thaw cycle.

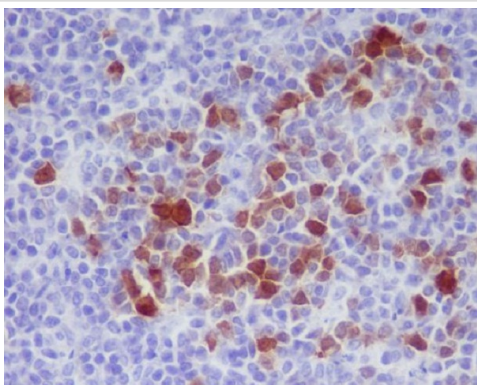
Application Details

WB:1:500~1:2000IHC:1:50~1:200IP:1:50

Images



Western blot analysis of Phospho-Cdk1/2 (T14) expression in HeLa cell lysate treated with hydroxyurea.



Immunohistochemical analysis of paraffin-embedded rat spleen, using Phospho-Cdk1/2 (T14) Antibody.

Product Description

Cdk2 is a member of the Ser/Thr protein kinase family. It is highly similar to the gene products of *S. cerevisiae* cdc28, and *S. pombe* cdc2. Cdk2 is closely related to cdc2 (cdk1) which has proved useful as a marker of proliferation. Cdk1 and Cdk2 are a catalytic subunits of the highly conserved protein kinase complex known as M-phase promoting factor (MPF), which is essential for G1/S and G2/M phase transitions of eukaryotic cell cycle.

Note: This product is for in vitro research use only