

FoxO3a (Phospho-Ser253) Rabbit mAb

Catalog No: #14171

Package Size: #14171-1 50ul #14171-2 100ul

Orders: order@signalwayantibody.comSupport: tech@signalwayantibody.com

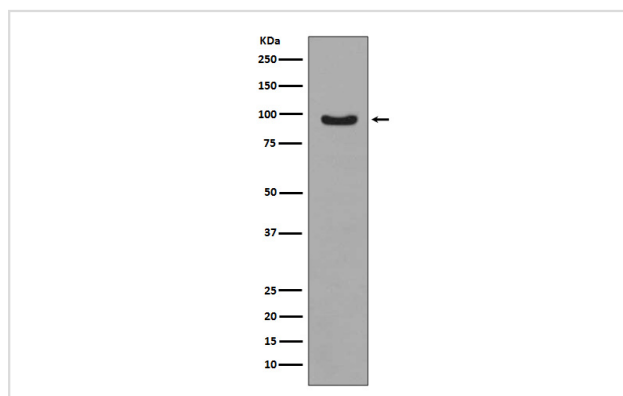
Description

Product Name	FoxO3a (Phospho-Ser253) Rabbit mAb
Host Species	Rabbit
Clonality	Monoclonal
Isotype	Rabbit IgG
Purification	Affinity-chromatography
Applications	WB IHC
Species Reactivity	Human Mouse Rat
Specificity	Phospho-FoxO3a (S253) Antibody detects endogenous levels of total Phospho-FoxO3a (S253)
Immunogen Description	A synthesized peptide derived from human FoxO3a
Other Names	AF6q21 protein; FKHR2; FKHL1; Forkhead box O3; forkhead box O3A; Forkhead box protein O3A; Forkhead in rhabdomyosarcoma-like 1; FOXO3A;
Accession No.	Uniprot:O43524
Uniprot	O43524
Calculated MW	97kDa
Formulation	Rabbit IgG in phosphate buffered saline , pH 7.4, 150mM NaCl, 0.02% sodium azide and 50% glycerol.
Storage	Store at +4ℳ C short term. Store at -20ℳ C long term. Avoid freeze / thaw cycle.

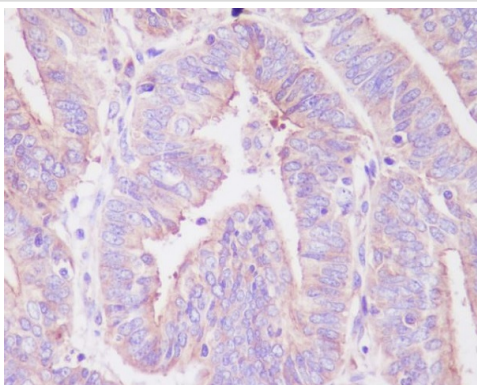
Application Details

WB:1:500~1:2000IHC:1:50~1:200

Images



Western blot analysis of Phospho-FoxO3a (S253) expression in MCF-7 cell lysate treated with IGF.



Immunohistochemical analysis of paraffin-embedded human uterus cancer, using Phospho-FoxO3a (S253) Antibody.

Product Description

This gene belongs to the forkhead family of transcription factors which are characterized by a distinct forkhead domain. This gene likely functions as a trigger for apoptosis through expression of genes necessary for cell death.

Note: This product is for in vitro research use only