

## Stat5 (Phospho-Tyr694) Rabbit mAb

Catalog No: #14172

Package Size: #14172-1 50ul #14172-2 100ul

Orders: [order@signalwayantibody.com](mailto:order@signalwayantibody.com)Support: [tech@signalwayantibody.com](mailto:tech@signalwayantibody.com)

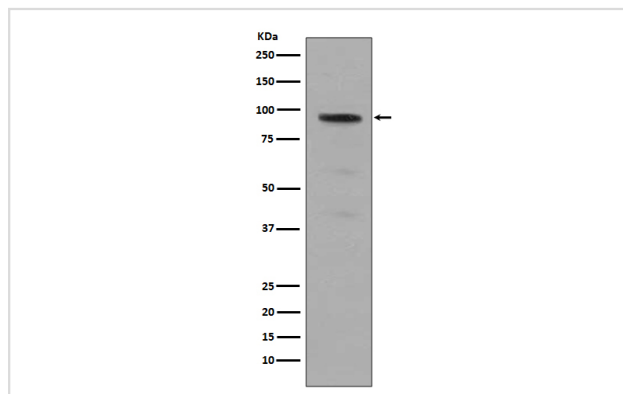
## Description

Product Name	Stat5 (Phospho-Tyr694) Rabbit mAb
Host Species	Rabbit
Clonality	Monoclonal
Isotype	Rabbit IgG
Purification	Affinity-chromatography
Applications	WB IHC
Species Reactivity	Human Mouse
Specificity	Phospho-Stat5 (Y694) Antibody detects endogenous levels of total Phospho-Stat5 (Y694)
Immunogen Description	A synthesized peptide derived from human Phospho-Stat5 (Y694)
Other Names	Signal transducer and activator of transcription 5A; STAT5; STAT5A; STAT5B; Transcription factor STAT5A; Transcription factor STAT5B; MGF;
Accession No.	Uniprot:P42229/P51692
Uniprot	P42229/P51692
Calculated MW	90kDa
Formulation	Rabbit IgG in phosphate buffered saline , pH 7.4, 150mM NaCl, 0.02% sodium azide and 50% glycerol.
Storage	Store at +4 $\Lambda$ C short term. Store at -20 $\Lambda$ C long term. Avoid freeze / thaw cycle.

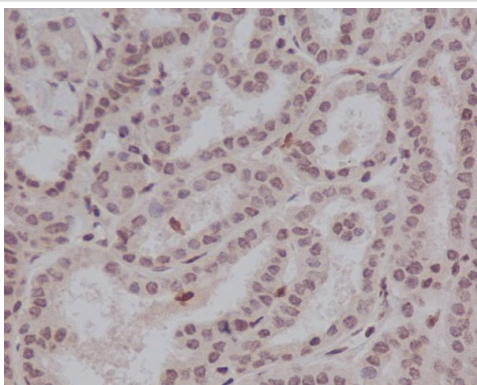
## Application Details

WB:1:500~1:2000IHC:1:50~1:200

## Images



Western blot analysis of Phospho-Stat5 (Y694) expression in A431 cell lysate treated with EGF.



Immunohistochemical analysis of paraffin-embedded human thyroid, using Phospho-Stat5 (Y694) Antibody.

## Product Description

Stat5 is activated in response to a wide variety of ligands including IL-2, GM-CSF, growth hormone and prolactin. Phosphorylation at Tyr694 is obligatory for Stat5 activation. This phosphorylation is mediated by Src upon erythropoietin stimulation. Stat5 is constitutively active in some leukemic cell types.

Note: This product is for in vitro research use only