

RSK1(Phospho-Ser380) Rabbit mAb

Catalog No: #14173

Package Size: #14173-1 50ul #14173-2 100ul

Orders: order@signalwayantibody.com

Support: tech@signalwayantibody.com

Description

| | |
|-----------------------|--|
| Product Name | RSK1(Phospho-Ser380) Rabbit mAb |
| Host Species | Rabbit |
| Clonality | Monoclonal |
| Isotype | Rabbit IgG |
| Purification | Affinity-chromatography |
| Applications | WB;IF |
| Species Reactivity | Human;Mouse;Rat |
| Specificity | Phospho-RSK1(S380) Antibody detects endogenous levels of total Phospho-RSK1(S380) |
| Immunogen Description | A synthesized peptide derived from human Phospho-RSK1(S380) |
| Other Names | RSK; HU-1; RSK1; MAPKAPK1A; RPS6KA1; |
| Accession No. | Uniprot:Q15418 |
| Uniprot | Q15418 |
| Calculated MW | 83 kDa |
| SDS-PAGE MW | 83 kDa |
| Formulation | Rabbit IgG in phosphate buffered saline , pH 7.4, 150mM NaCl, 0.02% sodium azide and 50% glycerol. |
| Storage | Store at +4 Λ C short term. Store at -20 Λ C long term. Avoid freeze / thaw cycle. |

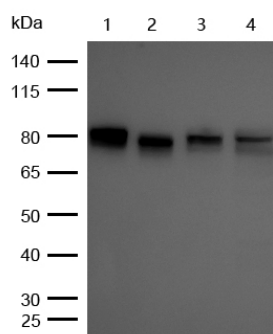
Application Details

WB:1:500~1:2000

ICC/IF:1:50~1:200

IP:1:50

Images



All lanes : Phospho-p90 S6K alpha 1 (S380) Rabbit mAb at 1/1k dilution

Lane 1 : A549 whole cell lysates

Lane 2 : A431 whole cell lysates

Lane 3 : JK whole cell lysates

Lane 4 : 3T3 whole cell lysates

Lysates/proteins at 20 μ g per lane.

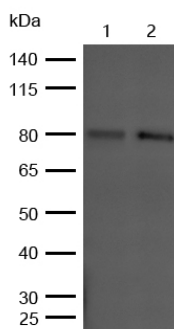
Secondary

All lanes : Goat Anti-Rabbit IgG H&L (HRP) at 1/20000 dilution

Predicted band size: 83 kDa

Observed band size: 83 kDa

Exposure time: 5 seconds



All lanes : Phospho-p90 S6K alpha 1 (S380) Rabbit mAb at 1/1k dilution

Lane 1 : Mouse Lung lysates

Lane 2 : Rat Skin lysates

Lysates/proteins at 20 µg per lane.

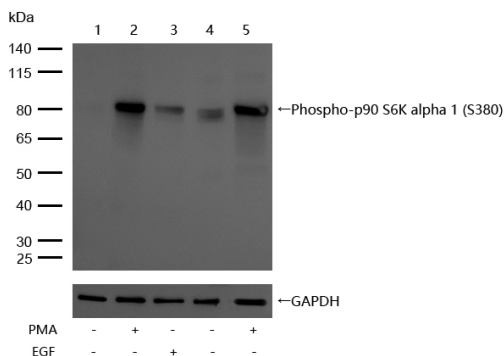
Secondary

All lanes : Goat Anti-Rabbit IgG H&L (HRP) at 1/20000 dilution

Predicted band size: 83 kDa

Observed band size: 83 kDa

Exposure time: 5 seconds



All lanes : Phospho-p90 S6K alpha 1 (S380) Rabbit mAb at 1/1k dilution

Lane 1 : HeLa whole cell lysates

Lane 2 : HeLa treated with 200nM PMA for 30min whole cell lysates

Lane 3 : HeLa treated with 100ng/ml EGF for 20min whole cell lysates

Lane 4 : JK whole cell lysates

Lane 5 : JK treated with 200nM PMA for 30min whole cell lysates

Lysates/proteins at 20 µg per lane.

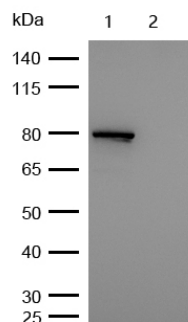
Secondary

All lanes : Goat Anti-Rabbit IgG H&L (HRP) at 1/20000 dilution

Predicted band size: 83 kDa

Observed band size: 83 kDa

Exposure time: 6 seconds

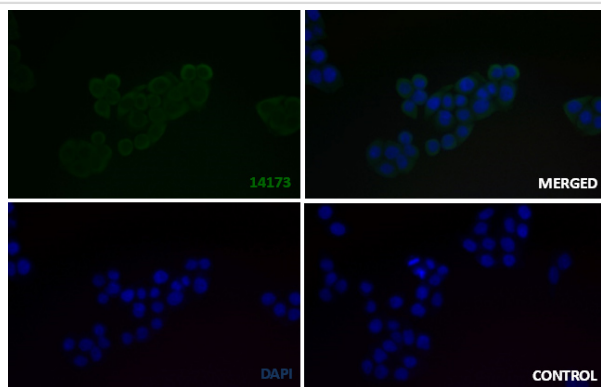


All lanes : Phospho-p90 S6K alpha 1 (S380) Rabbit mAb at 1/1k dilution

Lane 1 : Wild-type HeLa cell lysate

Lane 2 : Phospho-p90 S6K alpha 1 (S380) knockdown HeLa cell lysate

Lysates/proteins at 20 µg per lane.



Immunocytochemistry/ Immunofluorescence p-p90 S6K alpha 1 (S380) antibody (14173)

14173 staining p-p90 S6K alpha 1 (S380) in the HeLa cell line by ICC/IF. Cells were fixed with 4% Paraformaldehyde permeabilized with 0.1% Triton X-100.

Samples were incubated with 14173 at a working dilution of 1/100. The secondary antibody was Alexa FluorB 488 goat anti rabbit, used at a dilution of 1/500.

The negative control is shown in bottom right hand panel - for the negative control, purified 14173 was used at a dilution of 1/100 followed by Alexa FluorB 647 goat anti- rabbit antibody at a dilution of 1/500.

Nuclei were counterstained with DAPI.

Product Description

Rsk1 is a member of a family of 90kDa ribosomal protein S6 kinases, which includes Rsk1, Rsk2 and Rsk3. These are broadly expressed serine / threonine protein kinases activated in response to mitogenic stimuli, including extracellular signal regulated protein kinases Erk1 and Erk2. Rsk1 is activated by MAPK in vitro and in vivo via phosphorylation. Active Rsk1 appear to play a major role in transcriptional regulation by translocating to the nucleus and phosphorylating c-Fos and CREB.

Note: This product is for in vitro research use only