

IKB alpha (Phospho-Ser32) Rabbit mAb

Catalog No: #14174

Package Size: #14174-1 50ul #14174-2 100ul

Orders: order@signalwayantibody.comSupport: tech@signalwayantibody.com

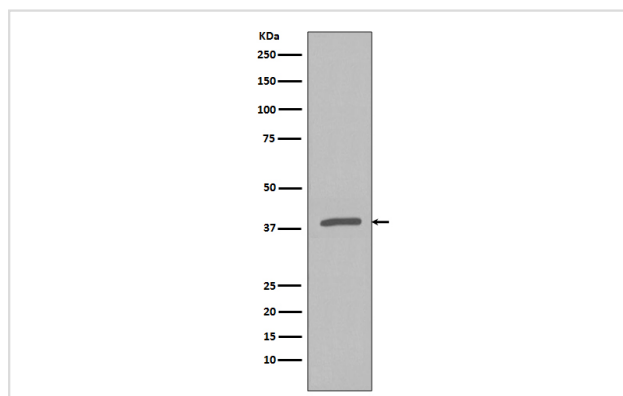
Description

Product Name	IKB alpha (Phospho-Ser32) Rabbit mAb
Host Species	Rabbit
Clonality	Monoclonal
Isotype	Rabbit IgG
Purification	Affinity-chromatography
Applications	WB IP
Species Reactivity	Human
Specificity	Phospho-IKB alpha (S32) Antibody detects endogenous levels of total Phospho-IKB alpha (S32)
Immunogen Description	A synthesized peptide derived from human Phospho-IKB alpha (S32)
Other Names	I-kappa-B-alpha; IKBA; IkappaBalpa; MAD3; NFKBI; NFKBIA; RL/IF-1;
Accession No.	Uniprot:P25963
Uniprot	P25963
Calculated MW	39kDa
Formulation	Rabbit IgG in phosphate buffered saline , pH 7.4, 150mM NaCl, 0.02% sodium azide and 50% glycerol.
Storage	Store at +4 Λ C short term. Store at -20 Λ C long term. Avoid freeze / thaw cycle.

Application Details

WB:1:500~1:2000IP:1:50

Images



Western blot analysis of Phospho-IKB alpha (S32) expression in HeLa cell lysate treated with Calyculin A and TNF-a.

Product Description

Activation occurs via phosphorylation of I κ B α at Ser32 and Ser36 followed by proteasome-mediated degradation that results in the release and nuclear translocation of active NF- κ B. I κ B α phosphorylation and resulting Rel-dependent transcription are activated by a highly diverse group of extracellular signals including inflammatory cytokines, growth factors, and chemokines. Kinases that phosphorylate I κ B at these activating sites have been identified.

Note: This product is for in vitro research use only