

IRE1 (Phospho-Ser724) Rabbit mAb

Catalog No: #14178

Package Size: #14178-1 50ul #14178-2 100ul

Orders: order@signalwayantibody.com

Support: tech@signalwayantibody.com

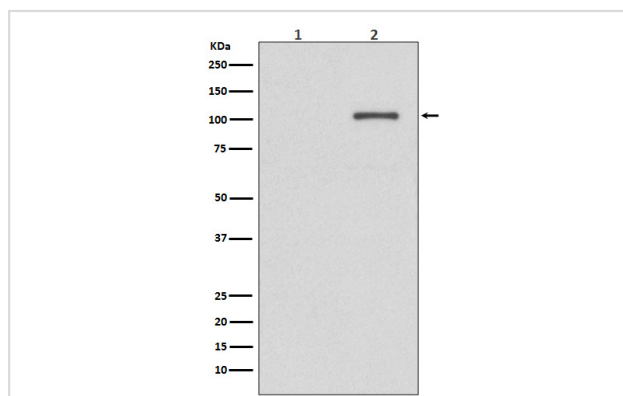
Description

Product Name	IRE1 (Phospho-Ser724) Rabbit mAb
Host Species	Rabbit
Clonality	Monoclonal
Isotype	Rabbit IgG
Purification	Affinity-chromatography
Applications	WB
Species Reactivity	Human
Specificity	Phospho-IRE1 (S724) Antibody detects endogenous levels of Phospho-IRE1 (S724)
Immunogen Description	A synthesized peptide derived from human Phospho-IRE1 (S724)
Other Names	ERN1, ER to nucleus signalling 1, Inositol-requiring enzyme 1, Inositol-requiring protein 1, Ire1-alpha, IRE1a, HIRE1p, IRE1, Inositol-requiring 1, IRE1P;
Accession No.	Uniprot:O75460
Uniprot	O75460
Calculated MW	110kDa
Formulation	Rabbit IgG in phosphate buffered saline , pH 7.4, 150mM NaCl, 0.02% sodium azide and 50% glycerol.
Storage	Store at +4ℳ C short term. Store at -20ℳ C long term. Avoid freeze / thaw cycle.

Application Details

WB:1:500~1:2000

Images



Western blot analysis of Phospho-IRE1 (S724) expression in (1) K562 cell lysate treated with AP; (2) Untreated K562 cell lysate.

Product Description

Senses unfolded proteins in the lumen of the endoplasmic reticulum via its N-terminal domain which leads to enzyme auto-activation. The active endoribonuclease domain splices XBP1 mRNA to generate a new C-terminus, converting it into a potent unfolded-protein response transcriptional activator and triggering growth arrest and apoptosis.

Note: This product is for in vitro research use only