

SMC1 (Phospho-Ser957) Rabbit mAb

Catalog No: #14190



Package Size: #14190-1 50ul #14190-2 100ul

Orders: [order@signalwayantibody.com](mailto:order@signalwayantibody.com)  
Support: [tech@signalwayantibody.com](mailto:tech@signalwayantibody.com)

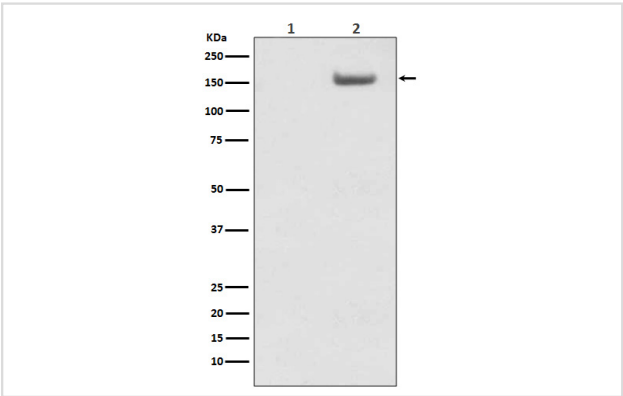
Description

Product Name	SMC1 (Phospho-Ser957) Rabbit mAb
Host Species	Rabbit
Clonality	Monoclonal
Isotype	Rabbit IgG
Purification	Affinity-chromatography
Applications	WB IHC ICC/IF
Species Reactivity	Human
Specificity	Phospho-SMC1 (S957) Antibody detects endogenous levels of Phospho-SMC1 (S957)
Immunogen Description	A synthesized peptide derived from human Phospho-SMC1 (S957)
Other Names	SB1.8/DXS423E protein; SM1A; SMC1A; SMC1L1; SMC1alpha protein; Sb1.8;
Accession No.	Uniprot:Q14683
Uniprot	Q14683
Calculated MW	160kDa
Formulation	Rabbit IgG in phosphate buffered saline , pH 7.4, 150mM NaCl, 0.02% sodium azide and 50% glycerol.
Storage	Store at +4Λ C short term. Store at -20Λ C long term. Avoid freeze / thaw cycle.

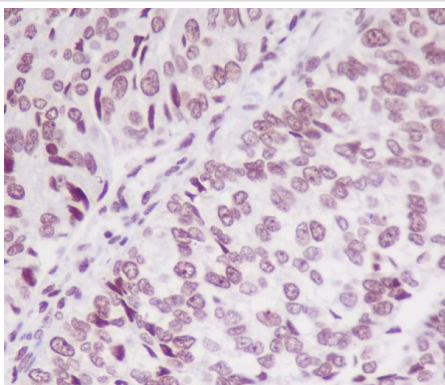
Application Details

WB:1:500~1:2000IHC:1:50~1:200ICC/IF:1:50~1:200

Images



Western blot analysis of Phospho-SMC1 (S957) expression in (1) HeLa cell lysate; (2) HeLa cells lysate treated with AP.



Immunohistochemical analysis of paraffin-embedded human bladder cancer, using Phospho-SMC1 (S957) Antibody.

## Product Description

Structural maintenance of chromosomes 1 (SMC1) protein is a chromosomal protein member of the cohesin complex that enables sister chromatid cohesion and plays a role in DNA repair . ATM/NBS1-dependent phosphorylation of SMC1 occurs at Ser957 and Ser966 in response to ionizing radiation (IR) as part of the intra-S-phase DNA damage checkpoint. SMC1 phosphorylation is ATM-independent in cells subjected to other forms of DNA damage, including UV light and hydroxyurea treatment.

Note: This product is for in vitro research use only