

## HSL (Phospho-Ser853) Rabbit mAb

Catalog No: #14191

Package Size: #14191-1 50ul #14191-2 100ul

Orders: order@signalwayantibody.com

Support: tech@signalwayantibody.com

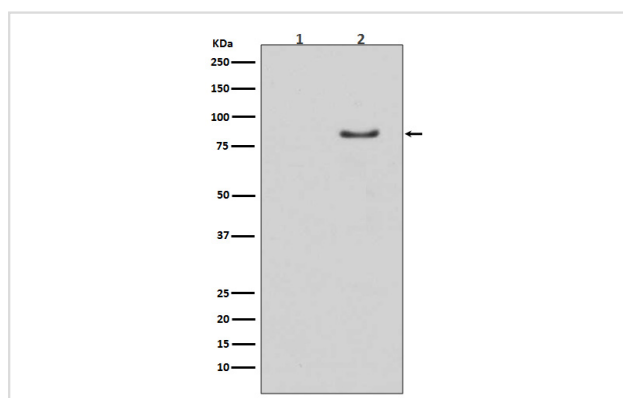
## Description

Product Name	HSL (Phospho-Ser853) Rabbit mAb
Host Species	Rabbit
Clonality	Monoclonal
Isotype	Rabbit IgG
Purification	Affinity-chromatography
Applications	WB
Species Reactivity	Human Mouse Rat
Specificity	Phospho-HSL (S853) Antibody detects endogenous levels of Phospho-HSL (S853)
Immunogen Description	A synthesized peptide derived from human Phospho-HSL (S853)
Other Names	Hormone sensitive lipase; LIPE; LIPS; HSL;
Accession No.	Uniprot:Q05469
Uniprot	Q05469
Calculated MW	83kDa
Formulation	Rabbit IgG in phosphate buffered saline , pH 7.4, 150mM NaCl, 0.02% sodium azide and 50% glycerol.
Storage	Store at +4 $\Lambda$ C short term. Store at -20 $\Lambda$ C long term. Avoid freeze / thaw cycle.

## Application Details

WB:1:5000~1:10000

## Images



Western blot analysis of Phospho-HSL (S853) expression in (1) Mouse muscle lysate; (2) Mouse muscle lysate treated with AP.

## Product Description

hormone sensitive lipase is a lipolytic enzyme of the 'GDXG' family. Plays a rate limiting step in triglyceride lipolysis. In adipose tissue and heart, it primarily hydrolyzes stored triglycerides to free fatty acids, while in steroidogenic tissues, it principally converts cholesteryl esters to free cholesterol for steroid hormone production.

---

Note: This product is for in vitro research use only