

PKC zeta (Phospho-Thr560) Rabbit mAb

Catalog No: #14202

Package Size: #14202-1 50ul #14202-2 100ul

Orders: order@signalwayantibody.comSupport: tech@signalwayantibody.com

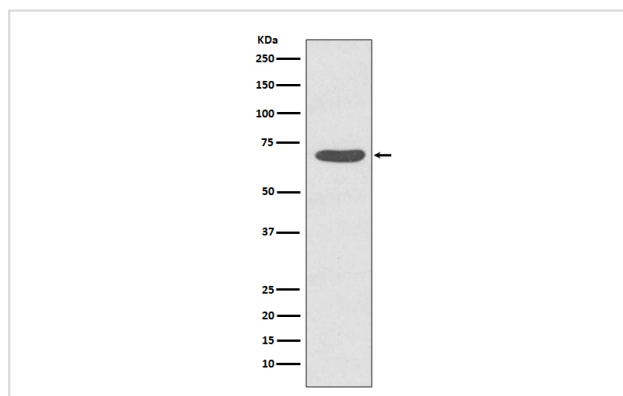
Description

Product Name	PKC zeta (Phospho-Thr560) Rabbit mAb
Host Species	Rabbit
Clonality	Monoclonal
Isotype	Rabbit IgG
Purification	Affinity-chromatography
Applications	WB IHC
Species Reactivity	Human Mouse Rat
Specificity	Phospho-PKC zeta (T560) Antibody detects endogenous levels of Phospho-PKC zeta (T560)
Immunogen Description	A synthesized peptide derived from human PKC zeta
Other Names	aPKCzeta; nPKC zeta; PKC 2; PKC ZETA; PKCZETA ; Protein kinase C zeta; r14-3-3;
Accession No.	Uniprot:Q05513
Uniprot	Q05513
Calculated MW	68kDa
Formulation	Rabbit IgG in phosphate buffered saline , pH 7.4, 150mM NaCl, 0.02% sodium azide and 50% glycerol.
Storage	Store at +4ℳ C short term. Store at -20ℳ C long term. Avoid freeze / thaw cycle.

Application Details

WB:1:1000~1:2000IHC:1:50~1:200

Images



Western blot analysis of Phospho-PKC zeta (T560) expression in HeLa cell treated with Calyculin A lysate.

Product Description

PKC is one of the earliest events in a cascade that controls a variety of cellular responses, including secretion, gene expression, proliferation, and muscle contraction. PKC is activated by diacylglycerol which in turn phosphorylates a range of cellular proteins. PKC also serves as the receptor for phorbol esters, a class of tumor promoters. Subunit of a quaternary complex that plays a central role in epithelial cell polarization.

Note: This product is for in vitro research use only