

EGFR (Phospho-Tyr1068) Rabbit mAb

Catalog No: #14205

Package Size: #14205-1 50ul #14205-2 100ul

Orders: order@signalwayantibody.com

Support: tech@signalwayantibody.com

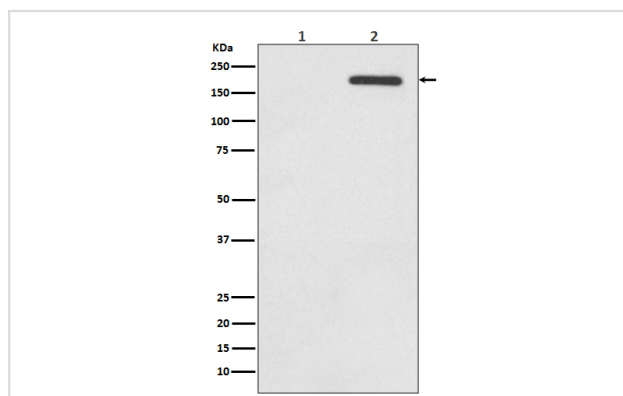
Description

Product Name	EGFR (Phospho-Tyr1068) Rabbit mAb
Host Species	Rabbit
Clonality	Monoclonal
Isotype	Rabbit IgG
Purification	Affinity-chromatography
Applications	WB ICC/IF IP FC
Species Reactivity	Human
Specificity	Phospho-EGFR (Y1068) Antibody detects endogenous levels of Phospho-EGFR (Y1068)
Immunogen Description	A synthesized peptide derived from human EGFR
Other Names	Epidermal growth factor receptor; Proto-oncogene c-ErbB-1; Receptor tyrosine-protein kinase erbB-1; ERBB; ERBB1; HER1; EGFR; Urogastrone;
Accession No.	Uniprot:P00533
Uniprot	P00533
Calculated MW	175kDa
Formulation	Rabbit IgG in phosphate buffered saline , pH 7.4, 150mM NaCl, 0.02% sodium azide and 50% glycerol.
Storage	Store at +4ℳ C short term. Store at -20ℳ C long term. Avoid freeze / thaw cycle.

Application Details

WB:1:1000~1:2000|ICC/IF:1:50~1:200|IP:1:100|FC:1:40

Images



Western blot analysis of Phospho-EGFR (Y1068) expression in (1) A431 cell lysate; (2) A431 cell treated with EGF lysate.

Product Description

Receptor tyrosine kinase binding ligands of the EGF family and activating several signaling cascades to convert extracellular cues into appropriate cellular responses. Phosphorylation of EGFR at specific serine and threonine residues attenuates EGFR kinase activity.

Note: This product is for in vitro research use only